

YABU**P**USHELBERG

Specification Documents

WALDORF ASTORIA / BEIJING, CHINA
09026

PUBLIC AREAS

INCLUDED:

FF&E SPECIFICATIONS

2012 FEBRUARY 03 – ISSUED FOR REVISION # 2

NOTE: CONTRACTOR IS RESPONSIBLE FOR ENSURING THAT ALL SPECIFIED ITEMS ARE SUBMITTED TO
YABU PUSHESLBERG FOR DESIGNER'S APPROVAL PRIOR TO PROCEEDING WITH WORK.
YABU PUSHESLBERG MUST APPROVE ANY SUBSTITUTIONS.

WALDORF ASTORIA HOTEL- BEIJING, CHINA / #09026
FFE SPECIFICATION INDEX (PUBLIC SPACES- LEVEL B2)
ISSUED FOR REVISION #2
2012 FEBRUARY 03

ITEM NO.	DESCRIPTION	PURCHASED / CUSTOM	ISSUE DATE	REVISION DATE
ACCESSORIES (ACC)				
B2 - 001 - ACC	SPA - RETAIL VITRINE	CUSTOM	2011 MAY 31	
B2 - 002A - ACC	POOL DECK - CANDELABRA	CUSTOM	2011 MAY 31	
B2 - 002B - ACC	POOL DECK - CANDELABRA	CUSTOM	2011 MAY 31	
B2 - 002C - ACC	POOL DECK - CANDELABRA	CUSTOM	2011 MAY 31	
CASEGOODS (CG)				
B2 - 400 - CG	SPA - RETAIL SIDE TABLE	CUSTOM	2011 MAY 31	
B2 - 401A - CG	SPA - RETAIL DISPLAY TABLE	CUSTOM	2011 MAY 31	
B2 - 401B - CG	SPA - VESTIBULE DISPLAY TABLE	CUSTOM	2011 MAY 31	
B2 - 401C - CG	SPA - CORRIDOR DISPLAY TABLE	CUSTOM	2011 MAY 31	
B2 - 401D - CG	SPA - LOCKER ROOM DRY VANITY	CUSTOM	2011 MAY 31	
B2 - 402 - CG	POOL DECK - COFFEE TABLE	CUSTOM	2011 MAY 31	2012 FEB 03
B2 - 403 - CG	POOL DECK - SIDE TABLE	CUSTOM	2011 MAY 31	2012 FEB 03
LIGHTING (LT)				
B2 - 500 - LT	SPA - RETAIL FLOOR LAMP	PURCHASED	2011 MAY 31	
SEATING (SG)				
B2 - 800A - SG	SPA - CORRIDOR BENCH	CUSTOM	2011 MAY 31	
B2 - 800B - SG	SPA - LOCKER ROOM BENCH	CUSTOM	2011 MAY 31	
B2 - 800C - SG	SPA - PVT CHANGE ROOM BENCH	CUSTOM	2011 MAY 31	
B2 - 801 - SG	SPA - LOCKER ROOM VANITY CHAIR	CUSTOM	2011 MAY 31	
B2 - 802 - SG	POOL DECK - SOFA	CUSTOM	2011 MAY 31	
B2 - 802.1 - SGP	- THROW PILLOW	CUSTOM	2011 MAY 31	
B2 - 802.2 - SGP	- THROW PILLOW	CUSTOM	2011 MAY 31	
B2 - 803 - SG	POOL DECK - LOUNGE CHAIR	CUSTOM	2011 MAY 31	
B2 - 803.1 - SGP	- THROW PILLOW	CUSTOM	2011 MAY 31	
B2 - 803.2 - SGP	- THROW PILLOW	CUSTOM	2011 MAY 31	
B2 - 803.3 - SGP	- BOLSTER	CUSTOM	2011 MAY 31	
B2 - 804 - SG	SPARE		2011 MAY 31	
B2 - 805 - SG	SPARE		2011 MAY 31	
B2 - 806 - SG	SPARE		2011 MAY 31	
B2 - 807 - SG	SPA - RETAIL LOUNGE CHAIR	CUSTOM	2011 MAY 31	
B2 - 807.1 - SGP	- THROW PILLOW	CUSTOM	2011 MAY 31	

Project Name: **WALDORF ASTORIA- BEIJING**Project #: **09026**Issue Date: **05/31/11**Revision(s): **02/03/12** **Δ 1**
Revised FinishItem Number: **B2-402-CG**Item Description: **Coffee Table- Custom**Area Name: **Spa & Pool Deck**

Item Quantity:

Manufacturer: By Custom Furniture Manufacturer

Address:

Phone:

Fax:

Contact:

E-mail:

Web:

Source: By Custom Furniture Manufacturer

Address:

Phone:

Fax:

Contact:

E-mail:

Web:

Description: Custom Coffee Table
Refer to drawing B2-402-CG for design details

Finish References: ML-02 Metal USB-10 -

Notes: Location= Spa / Pool Deck

Required Item(s) for Designer Approval Prior to Fabrication:

Prepared By: CG

☐ Seaming Diagram ☐ Strike-Off ☒ Finish Sample ☐ Cutting ☒ Shop Dwgs ☐ Prototype ☐ Flame Certificate

Instructions:

- 1 Any materials used must be suitable for use in location specified and varying climatic situations.
- 2 All work is to be corner blocked, well fitted, double doweled, glued, and screwed into place. Joint glue must be of the best quality and any excess glue will be thoroughly cleaned.
- 3 All items are to be mill fabricated according to the size and design indicated on the approved shop drawings.
- 4 Legs and bases must be made of wood solids.
- 5 All drawer fronts will be as specified and should be made of lumber or veneer plywood.

Project Name: **WALDORF ASTORIA- BEIJING**
 Project #: **09026**
 Issue Date: **05/31/11**
 Revision(s): **02/03/12 Δ 1**

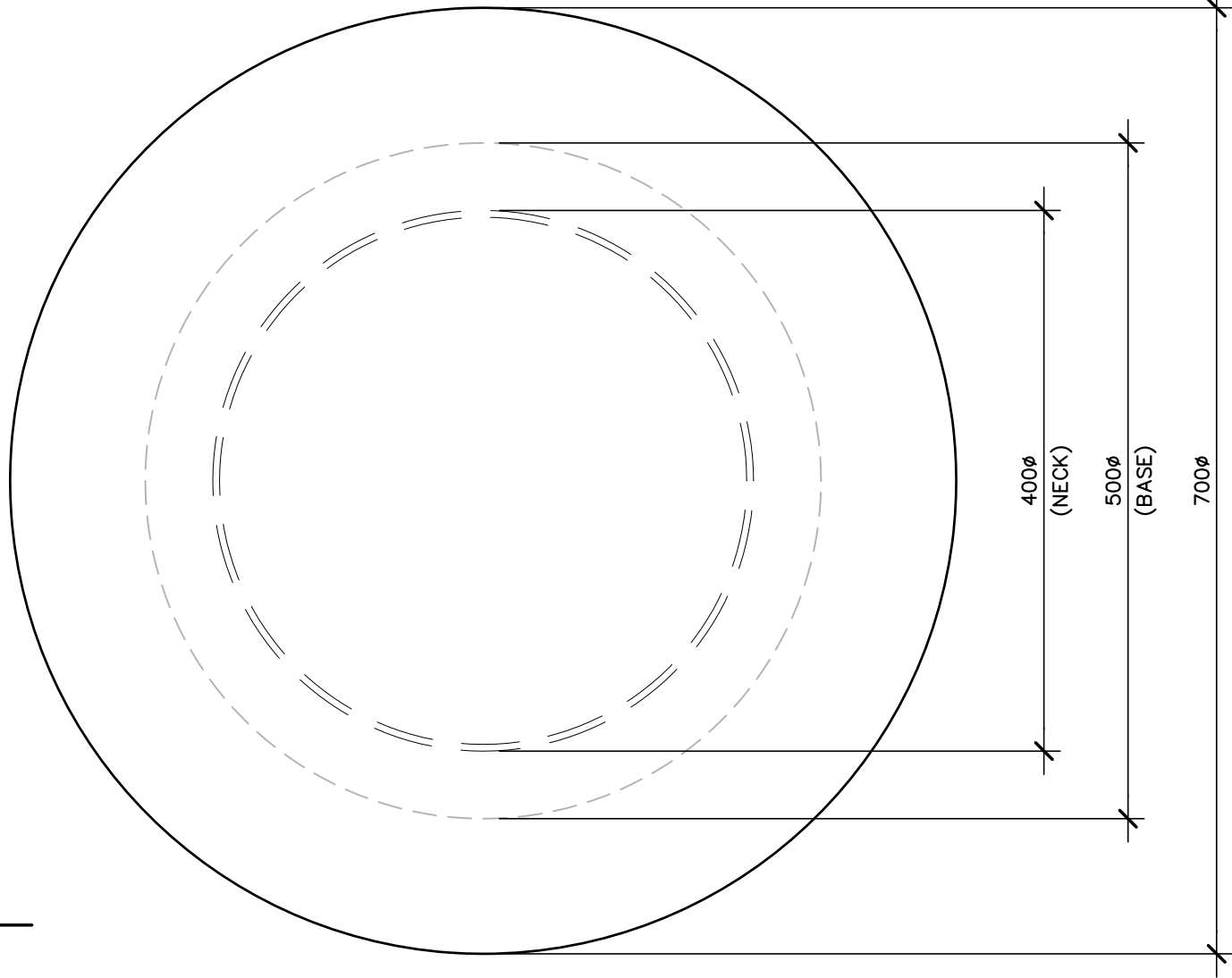
Item Number: **B2-402-CG**
 Item Description: **Coffee Table- Custom**
 Area Name: **Spa & Pool Deck**

Item Quantity:

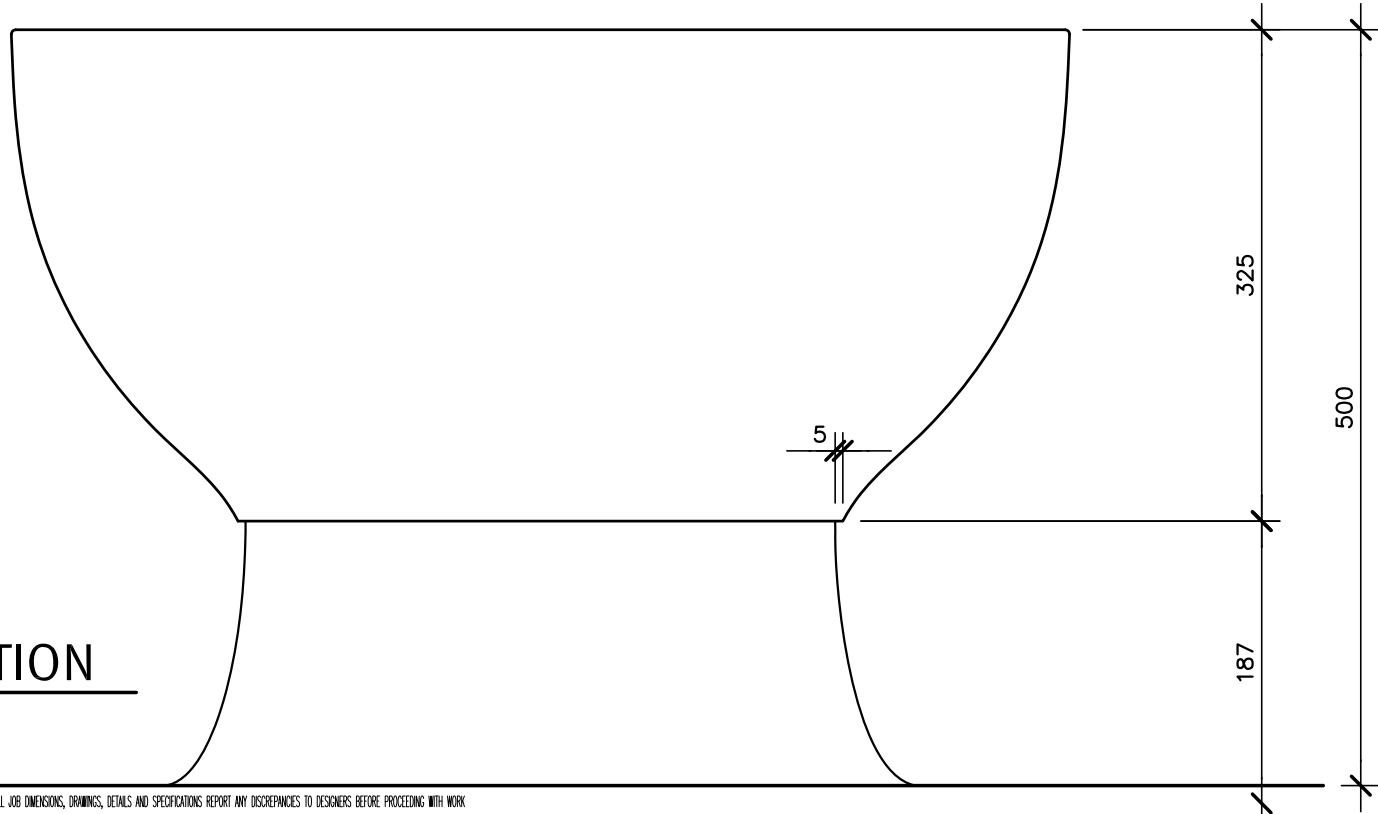
Manufacturer: By Custom Furniture Manufacturer Source: By Custom Furniture Manufacturer

Instructions:

- 6 Drawer sides, backs and sub fronts will be made of 13 mm (1/2") solid lumber or veneered plywood.
- 7 Drawer bottoms will be made of solid lumber or veneered plywood. Drawer bottoms may not be made of Masonite or particleboard.
- 8 Drawer sides will be dovetailed or butterfly jointed and glued under pressure. The dovetails will be milled true and even.
- 9 Drawer and door interiors must be veneered and finished to match the exterior of the unit.
- 10 Drawer and door interiors will be sanded smooth, lacquered and waxed.
- 11 All drawers will have a stop mechanism that is removable when required for repairs or access.
- 12 All cabinet doors will be as specified and should be made of 19 mm (3/4") lumber or veneered plywood or as required.
- 13 Cabinet door interiors must be veneered and finished to match the exterior of the unit.
- 14 All adjustable shelving will be made of solid wood or veneered plywood unless otherwise specified.
- 15 For all shelves, the top, bottom, and side edges must match the exterior of the unit.
- 16 All casegood hardware and accessories will be furnished and installed by the vendor and must be indicated on the shop drawings.
- 17 All drawers and pull out shelves will have concealed, undermounted hardware. Full extension, metal drawer glides or shelf slides with ball bearing nylon rollers are required. These should be self-closing and have stops.
- 18 All casegood and softgood legs and bases will have self-leveling adjustable nylon contract quality carpet glides, appropriate to the weight of the piece and the floor finish on which the casegood will be placed.
- 19 All glides and levelers will be non-rusting.
- 20 The casegood vendor will supply templates for all glass tops when supplied by others.
- 21 For all loose FF&E items, the Procurement Agent (or, in the absence of such Agent, the Fabricator) is responsible for obtaining site dimensions so as to ensure that all pieces can be successfully delivered to the final project location
- 22 as outlined in Yabu Pushelberg's drawings.



1A PLAN
SCALE: 1:5



1B ELEVATION
SCALE: 1:5

CONTRACTOR MUST CHECK AND VERIFY ALL JOB DIMENSIONS, DRAWINGS, DETAILS AND SPECIFICATIONS REPORT ANY DISCREPANCIES TO DESIGNERS BEFORE PROCEEDING WITH WORK

YABUPUSHELBERG

55 BOOTH AVENUE TORONTO ONTARIO CANADA
M4M 2M3 TELEPHONE 416.778.9779 FAX 416.778.9747
4F-138 SPRING STREET NEW YORK NEW YORK USA 10012-3854
TELEPHONE 212.226.0808 FAX 212.226.0666
EMAIL DESIGN@YABUPUSHELBERG.COM

GENERAL NOTES

- 1. MANUFACTURER TO SUBMIT SHOP DRAWINGS FOR DESIGNER'S APPROVAL PRIOR TO PROCEEDING WITH WORK.
- 2. MANUFACTURER TO SUBMIT MATERIAL SAMPLES FOR DESIGNER'S APPROVAL PRIOR TO PROCEEDING WITH WORK.
- 3. ALL CONSTRUCTION TO BE 20mm THK. MDF UNLESS OTHERWISE NOTED.
- 4. ALL EXPOSED SURFACES TO BE ML2
- 5. ALL WELDS TO BE GROUND SMOOTH AND POLISHED WITHOUT SEAMS.

ISSUE ISSUE DATE

NO.	DESCRIPTION	DATE
1	ISSUED FOR 100% COORDINATION	05.31.2011
2	ISSUED FOR REVI	02.03.2012

REVISION REVISION DATE

PROJECT PROJECT NO. 09026

WALDORF ASTORIA
BEIJING

BEIJING, CHINA

DRAWING DRAWING NO.

B2-402-CG 1 OF 2

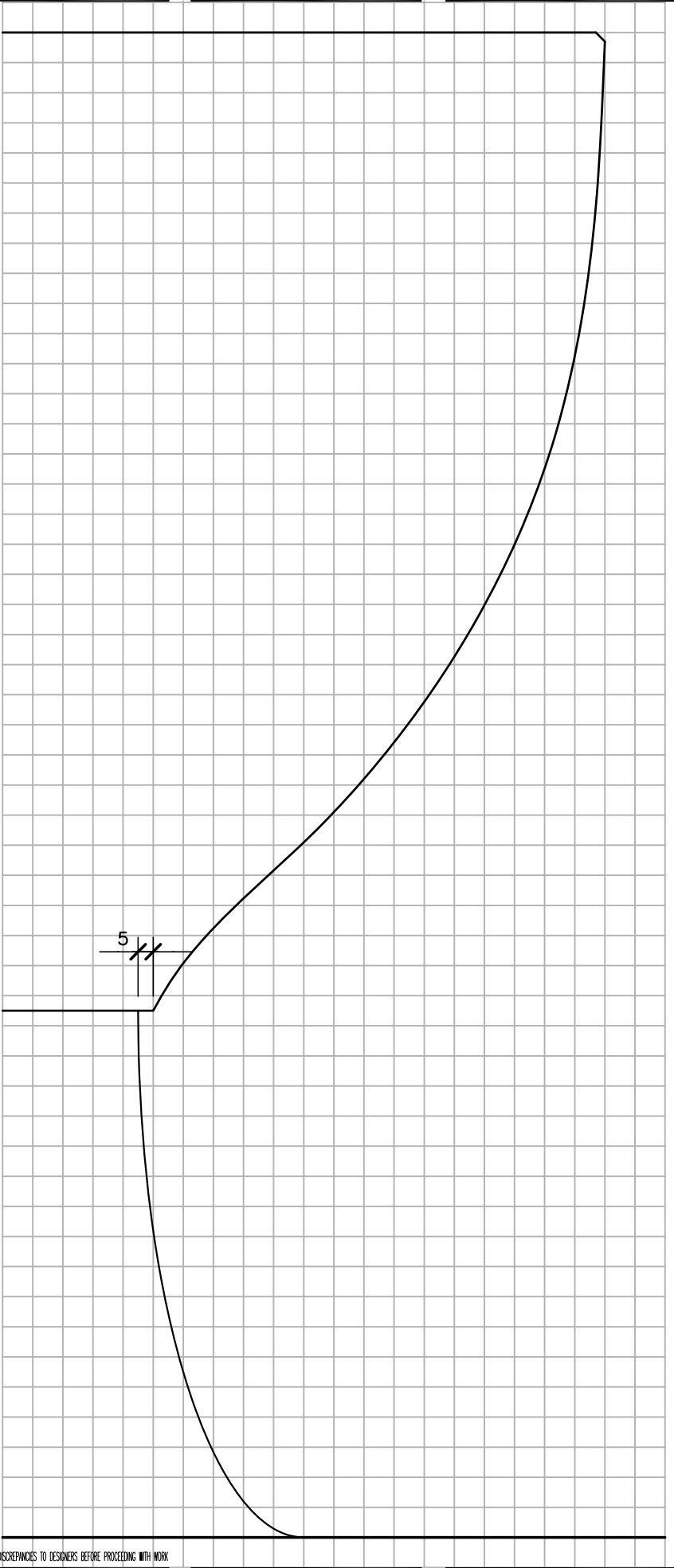
COFFEE TABLE
@ POOL DECK

SCALE DATE
AS NOTED MAY 31, 2011
DRAWN BY CHECKED BY
JS AM/WM

2A

PROFILE DETAIL

SCALE: 1:2



CONTRACTOR MUST CHECK AND VERIFY ALL JOB DIMENSIONS, DRAWINGS, DETAILS AND SPECIFICATIONS REPORT ANY DISCREPANCIES TO DESIGNERS BEFORE PROCEEDING WITH WORK

YABUPUSHELBERG

55 BOOTH AVENUE TORONTO ONTARIO CANADA
M4M 2M3 TELEPHONE 416.778.9779 FAX 416.778.9747
4F-138 SPRING STREET NEW YORK NEW YORK USA 10012-3854
TELEPHONE 212.226.0808 FAX 212.226.0666
EMAIL DESIGN@YABUPUSHELBERG.COM

GENERAL NOTES

1. MANUFACTURER TO SUBMIT SHOP DRAWINGS FOR DESIGNER'S APPROVAL PRIOR TO PROCEEDING WITH WORK.
2. MANUFACTURER TO SUBMIT MATERIAL SAMPLES FOR DESIGNER'S APPROVAL PRIOR TO PROCEEDING WITH WORK.
3. ALL CONSTRUCTION TO BE 20mm THK. MDF UNLESS OTHERWISE NOTED.
4. ALL EXPOSED SURFACES TO BE ML2
5. ALL WELDS TO BE GROUND SMOOTH AND POLISHED WITHOUT SEAMS.

ISSUE ISSUE DATE

NO.	DESCRIPTION	DATE
1	ISSUED FOR 100% COORDINATION	05.31.2011
2	ISSUED FOR REVI	02.03.2012

REVISION REVISION DATE

PROJECT PROJECT NO. 09026

WALDORF ASTORIA
BEIJING

BEIJING, CHINA

DRAWING DRAWING NO.
B2-402-CG 2 OF 2

COFFEE TABLE
@ POOL DECK

SCALE DATE
AS NOTED MAY 31, 2011
DRAWN BY CHECKED BY
JS AM/WM

Project Name: **WALDORF ASTORIA- BEIJING**Project #: **09026**Issue Date: **05/31/11**Revision(s): **02/03/12** **Δ 1**
Revised FinishItem Number: **B2-403-CG**Item Description: **Side Table- Custom**Area Name: **Spa & Pool Deck**

Item Quantity:

Manufacturer: By Custom Furniture Manufacturer

Address:

Phone:

Fax:

Contact:

E-mail:

Web:

Source: By Custom Furniture Manufacturer

Address:

Phone:

Fax:

Contact:

E-mail:

Web:

Description: Custom Side Table
Refer to drawing B2-403-CG for design details

Finish References: ML-02 Metal USB-10 -

Notes: Location= Spa / Pool Deck

Required Item(s) for Designer Approval Prior to Fabrication:

Prepared By: CG

☐ Seaming Diagram ☐ Strike-Off ☒ Finish Sample ☐ Cutting ☒ Shop Dwgs ☐ Prototype ☐ Flame Certificate

Instructions:

- 1 Any materials used must be suitable for use in location specified and varying climatic situations.
- 2 All work is to be corner blocked, well fitted, double doweled, glued, and screwed into place. Joint glue must be of the best quality and any excess glue will be thoroughly cleaned.
- 3 All items are to be mill fabricated according to the size and design indicated on the approved shop drawings.
- 4 Legs and bases must be made of wood solids.
- 5 All drawer fronts will be as specified and should be made of lumber or veneer plywood.

Project Name: **WALDORF ASTORIA- BEIJING**
 Project #: **09026**
 Issue Date: **05/31/11**
 Revision(s): **02/03/12 Δ 1**

Item Number: **B2-403-CG**
 Item Description: **Side Table- Custom**
 Area Name: **Spa & Pool Deck**

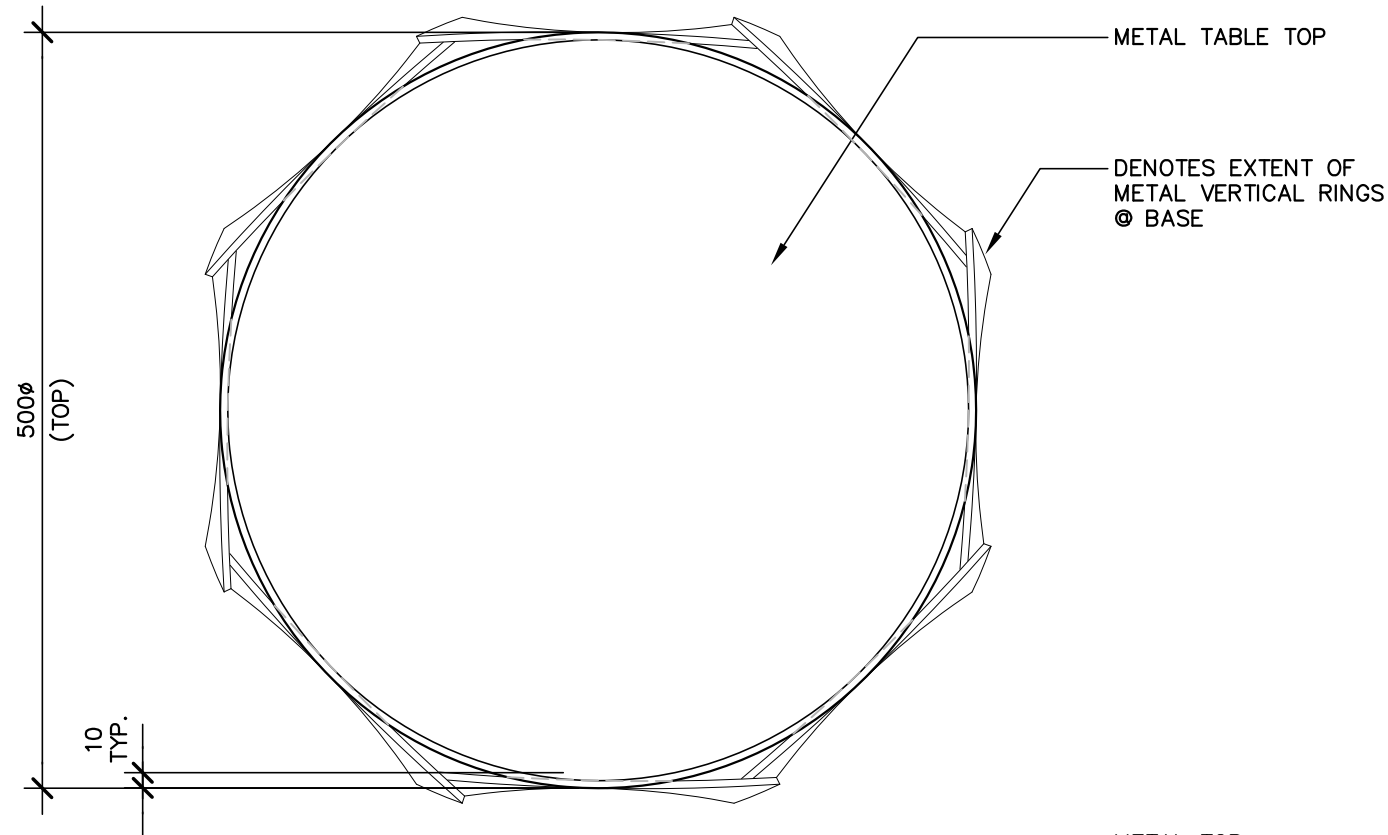
Item Quantity:

Manufacturer: By Custom Furniture Manufacturer Source: By Custom Furniture Manufacturer

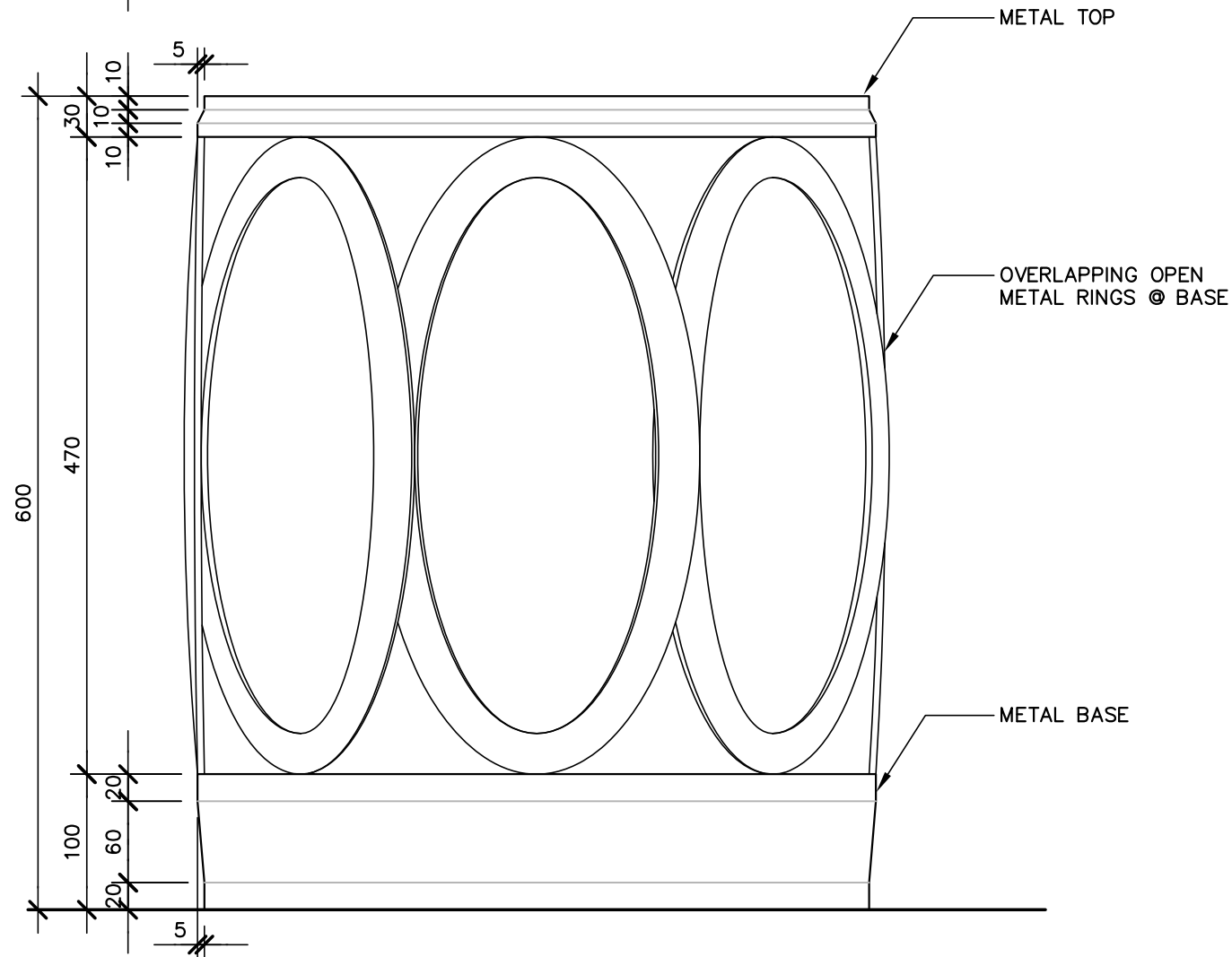
Instructions:

- 6 Drawer sides, backs and sub fronts will be made of 13 mm (1/2") solid lumber or veneered plywood.
- 7 Drawer bottoms will be made of solid lumber or veneered plywood. Drawer bottoms may not be made of Masonite or particleboard.
- 8 Drawer sides will be dovetailed or butterfly jointed and glued under pressure. The dovetails will be milled true and even.
- 9 Drawer and door interiors must be veneered and finished to match the exterior of the unit.
- 10 Drawer and door interiors will be sanded smooth, lacquered and waxed.
- 11 All drawers will have a stop mechanism that is removable when required for repairs or access.
- 12 All cabinet doors will be as specified and should be made of 19 mm (3/4") lumber or veneered plywood or as required.
- 13 Cabinet door interiors must be veneered and finished to match the exterior of the unit.
- 14 All adjustable shelving will be made of solid wood or veneered plywood unless otherwise specified.
- 15 For all shelves, the top, bottom, and side edges must match the exterior of the unit.
- 16 All casework hardware and accessories will be furnished and installed by the vendor and must be indicated on the shop drawings.
- 17 All drawers and pull out shelves will have concealed, undermounted hardware. Full extension, metal drawer glides or shelf slides with ball bearing nylon rollers are required. These should be self-closing and have stops.
- 18 All casework and softgood legs and bases will have self-leveling adjustable nylon contract quality carpet glides, appropriate to the weight of the piece and the floor finish on which the casework will be placed.
- 19 All glides and levelers will be non-rusting.
- 20 The casework vendor will supply templates for all glass tops when supplied by others.
- 21 For all loose FF&E items, the Procurement Agent (or, in the absence of such Agent, the Fabricator) is responsible for obtaining site dimensions so as to ensure that all pieces can be successfully delivered to the final project location
- 22 as outlined in Yabu Pushelberg's drawings.

1A PLAN
SCALE: 1:5



1B ELEVATION
SCALE: 1:5



YABUPUSHELBERG

55 BOOTH AVENUE TORONTO ONTARIO CANADA
M4M 2M3 TELEPHONE 416.778.9779 FAX 416.778.9747
4F-138 SPRING STREET NEW YORK NEW YORK USA 10012-3854
TELEPHONE 212.226.0808 FAX 212.226.0666
EMAIL DESIGN@YABUPUSHELBERG.COM

GENERAL NOTES

1. MANUFACTURER TO SUBMIT SHOP DRAWINGS FOR DESIGNER'S APPROVAL PRIOR TO PROCEEDING WITH WORK.
2. MANUFACTURER TO SUBMIT MATERIAL SAMPLES FOR DESIGNER'S APPROVAL PRIOR TO PROCEEDING WITH WORK.
3. ALL CONSTRUCTION TO BE 20mm THK. MDF UNLESS OTHERWISE NOTED.
4. ALL EXPOSED SURFACES TO BE ML2
5. ALL WELDS TO BE GROUND SMOOTH AND POLISHED WITHOUT SEAMS.

ISSUE ISSUE DATE

NO.	DESCRIPTION	DATE
1	ISSUED FOR 100% COORDINATION	05.31.2011
2	ISSUED FOR REVI	02.03.2012

REVISION REVISION DATE

PROJECT PROJECT NO. 10010

WALDORF ASTORIA BEIJING

BEIJING, CHINA

DRAWING DRAWING NO.

B2-403-CG 1 OF 1

SIDE TABLE
@ POOL DECK

SCALE DATE

AS NOTED MAY 31, 2011

DRAWN BY CHECKED BY
JS AM/WM

WALDORF ASTORIA HOTEL- BEIJING, CHINA / #09026
FFE SPECIFICATION INDEX (PUBLIC SPACES- LEVEL 1 (L1))
ISSUED FOR 1REVISION #2
2012 FEBRUARY 03

ITEM NO.	DESCRIPTION	PURCHASED / CUSTOM	ISSUE DATE	REVISION DATE
AREA RUGS (AR)				
L1 - 100 - AR	LOBBY LOUNGE	CUSTOM	2011 MAY 31	2011 DEC 17
L1 - 101 - AR	LOBBY BAR	CUSTOM	2011 MAY 31	2011 DEC 17
L1 - 102 - AR	PEACOCK ALLEY	CUSTOM	2011 MAY 31	
CASEGOODS (CG)				
L1 - 400A - CG	PEACOCK ALLEY - SIDE TABLE	CUSTOM	2011 MAY 31	
L1 - 400B - CG	LOBBY LOUNGE - COFFEE TABLE	CUSTOM	2011 MAY 31	
L1 - 401 - CG	SPARE		2011 MAY 31	
L1 - 402 - CG	SIDE TABLE		2011 MAY 31	
L1 - 403 - CG	SPARE		2011 MAY 31	
L1 - 404 - CG	ELEVATOR LOBBY-CONSOLE	CUSTOM	2011 MAY 31	
L1 - 405 - CG	PEACOCK ALLEY-CONSOLE	CUSTOM	2011 MAY 31	
L1 - 406 - CG	PEACOCK ALLEY-SCREEN	CUSTOM	2011 MAY 31	
L1 - 407 - CG	SPARE		2011 MAY 31	
L1 - 408 - CG	SIDE TABLE	CUSTOM	2011 MAY 31	
L1 - 409 - CG	SAFE ROOM-DESK	CUSTOM	2011 MAY 31	
L1 - 410 - CG	SPARE		2011 MAY 31	
L1 - 411 - CG	RETAIL - DESK	CUSTOM	2011 MAY 31	
L1 - 412 - CG	SPARE		2011 MAY 31	
L1 - 413 - CG	RETAIL - SIDE TABLE	CUSTOM	2011 MAY 31	
L1 - 414 - CG	SPARE		2011 MAY 31	
L1 - 415 - CG	SPARE		2011 MAY 31	
L1 - 416 - CG	LOBBY LOUNGE - COFFEE TABLE	CUSTOM	2011 MAY 31	
L1 - 417 - CG	LOBBY LOUNGE - SIDE TABLE	CUSTOM	2011 MAY 31	
L1 - 418 - CG	LOBBY LOUNGE/BAR / RETAIL- COFFEE TABLE	CUSTOM	2011 MAY 31	
L1 - 419 - CG	LOBBY LOUNGE - SCREEN	CUSTOM	2011 MAY 31	
L1 - 420 - CG	LOBBY LOUNGE - CREDENZA	CUSTOM	2011 MAY 31	
L1 - 421 - CG	LOBBY LOUNGE / RETAIL - CREDENZA	CUSTOM	2011 MAY 31	
L1 - 422 - CG	LOBBY LOUNGE - SIDE TABLE	CUSTOM	2011 MAY 31	
L1 - 423 - CG	LOBBY SALON LOUNGE - SCREEN	CUSTOM	2011 MAY 31	
L1 - 424 - CG	LOBBY BAR - SIDE TABLE	CUSTOM	2011 MAY 31	
L1 - 425 - CG	BRASSARIE - DINING TABLE	CUSTOM	2011 MAY 31	
L1 - 426 - CG	BRASSARIE - SIDE TABLE	CUSTOM	2011 MAY 31	
L1 - 427 - CG	BRASSARIE - DISPLAY TABLE	CUSTOM	2011 MAY 31	
L1 - 428 - CG	BRASSARIE - DISPLAY / PDR TABLE	CUSTOM	2011 MAY 31	
L1 - 429 - CG	BRASSARIE - PDR SIDE TABLE	CUSTOM	2011 MAY 31	
L1 - 430 - CG	BRASSARIE - HOST TABLE	CUSTOM	2011 MAY 31	
LIGHTING (LT)				
L1 - 500 - LT	PEACOCK ALLEY- FLOOR LAMP	PURCHASED	2011 MAY 31	
L1 - 501 - LT	LOBBY LOUNGE / RETAIL / PEACOCK ALLEY/ LIBRARY - FLOOR LAMP	PURCHASED	2011 MAY 31	
L1 - 502 - LT	LOBBY RETAIL - TASK LIGHT	PURCHASED	2011 MAY 31	
L1 - 503 - LT	PEACOCK ALLEY - TABLE LAMP	PURCHASED	2011 MAY 31	
L1 - 504 - LT	ELEVATOR LOBBY - TABLE LAMP	PURCHASED	2011 MAY 31	
L1 - 505 - LT	RECEPTION -SUSPENDED T LIGHTING	PURCHASED	2011 MAY 31	
L1 - 506 - LT	SAFE ROOM-WALL SCONCE	PURCHASED	2011 MAY 31	
L1 - 507 - LT	LOBBY LOUNGE- FLOOR LAMP	PURCHASED	2011 MAY 31	
L1 - 508 - LT	LOBBY LOUNGE - TABLE LAMP	PURCHASED	2011 MAY 31	
L1 - 509 - LT	BRASSERIE - FLOOR LAMP	CUSTOM	2011 MAY 31	
L1 - 510 - LT	BRASSERIE - PDR PENDANT	PURCHASED / CUSTOM	2011 MAY 31	
L1 511 LT	WELCOMING FOYER - FLOOR LAMP	PURCHASED	2011 MAY 31	
L1 512 LT	BRASSERIE POS- PENDANT	PURCHASED	2011 MAY 31	
L1 - 513 - LT	PENDANT	CUSTOM	2011 DEC 17	
L1 514 LT	WALL SCONCE	PURCHASED	2012 FEB 06	
SEATING (SG)				
L1 - 800 - SG	PEACOCK ALLEY-CHAIR	CUSTOM	2011 MAY 31	
L1 800.1 SGP	- THROW PILLOW	CUSTOM	2011 MAY 31	

WALDORF ASTORIA HOTEL- BEIJING, CHINA / #09026
FFE SPECIFICATION INDEX (PUBLIC SPACES- LEVEL 1 (L1))
ISSUED FOR 1REVISION #2
2012 FEBRUARY 03

L1 - 801 - SG	PEACOCK ALLEY-BENCH	CUSTOM	2011 MAY 31	
L1 - 802 - SG	PEACOCK ALLEY-CHAIR	CUSTOM	2011 MAY 31	
L1 - 802.1 - SGP	- THROW PILLOW	CUSTOM	2011 MAY 31	
L1 - 803 - SG	ELEVATOR LOBBY-CHAIR	PURCHASED	2011 MAY 31	
L1 - 804 - SG	SPARE	CUSTOM	2011 MAY 31	
L1 - 805 - SG	WELCOMING FOYER-BENCH	CUSTOM	2011 MAY 31	
L1 - 806 - SG	LOBBY RETAIL - TASK CHAIR	CUSTOM	2011 MAY 31	
L1 - 807A - SG	LOBBY BAR - ARMCHAIR	CUSTOM	2011 MAY 31	2012 FEB 03
L1 - 807A.1 - SGP	- THROW PILLOW	CUSTOM	2011 MAY 31	2012 FEB 03
L1 - 807B - SG	RETAIL - ARMCHAIR	CUSTOM	2011 MAY 31	
L1 - 807B.A - SGP	- THROW PILLOW	CUSTOM	2011 MAY 31	
L1 - 807B.B - SGP	- THROW PILLOW	CUSTOM	2011 MAY 31	
L1 - 808 - SG	LOBBY LOUNGE - SOFA	CUSTOM	2011 MAY 31	2012 FEB 03
L1 - 808.1 - SG	- THROW PILLOW	CUSTOM	2011 MAY 31	
L1 - 808.2 - SG	- THROW PILLOW	CUSTOM	2011 MAY 31	
L1 - 809 - SG	LOBBY LOUNGE - ARMCHAIR	CUSTOM	2011 MAY 31	
L1 - 809.1 - SGP	- THROW PILLOW	CUSTOM	2011 MAY 31	
L1 - 810 - SG	LOBBY LOUNGE - SOFA	CUSTOM	2011 MAY 31	
L1 - 810.1 - SG	- THROW PILLOW	CUSTOM	2011 MAY 31	
L1 - 810.2 - SG	- THROW PILLOW	CUSTOM	2011 MAY 31	
L1 - 811 - SG	LOBBY LOUNGE - ARMCHAIR	CUSTOM	2011 MAY 31	
L1 - 811.1 - SGP	- THROW PILLOW	CUSTOM	2011 MAY 31	
L1 - 812 - SG	LOBBY BAR - BARSTOOL	CUSTOM	2011 MAY 31	2012 FEB 03
L1 - 813 - SG	BRASSERIE - ARMCHAIR	CUSTOM	2011 MAY 31	
L1 - 814 - SG	BRASSERIE - SOFA	CUSTOM	2011 MAY 31	
L1 - 815 - SG	RECEPTION AREA-CHAIR	CUSTOM	2011 MAY 31	
WINDOW TREATMENT (WT)				
L1 - 900 - WT	LOBBY LOUNGE, BAR, BRASSERIE & RETAIL	CUSTOM	2011 MAY 31	2012 FEB 03

Project Name: **WALDORF ASTORIA- BEIJING**Project #: **09026**Issue Date: **05/31/11**Revision(s): **02/03/12** **Δ 1**
Revised fabricItem Number: **L1-807A-SG**Item Description: **Armchair- Custom**Area Name: **Level 1**

Item Quantity:

Manufacturer: By Custom Furniture Manufacturer

Source: By Custom Furniture Manufacturer

Address:

Address:

Phone:

Phone:

Fax:

Fax:

Contact:

Contact:

E-mail:

E-mail:

Web:

Web:

Description: Custom Armchair
Refer to drawing L1-807A-SG for design detailsFinish References: FB-37 Somerset / Chippendale / 910038-06 -
ML-02 Metal USB-10 -Notes: Requires custom throw pillows (by Others):
L1-807A.1-SGP
Refer to FFE Specifications for details

Location= Lobby Bar

Required Item(s) for Designer Approval Prior to Fabrication:

Prepared By: CG

☐ Seaming Diagram
 ☐ Strike-Off
 ☐ Finish Sample
 ☒ Cutting
 ☒ Shop Dwgs
 ☐ Prototype
 ☐ Flame Certificate

Instructions:

- 1 Any materials used must be suitable for use in location specified and varying climatic situations.
- 2 Vendors are obligated to ensure custom designed seating is contract quality and appropriate for the use intended.
- 3 All items are to be mill fabricated according to the size and design indicated on the approved shop drawings.
- 4 Legs and bases must be made of wood solids.

Project Name: **WALDORF ASTORIA- BEIJING**Project #: **09026**Issue Date: **05/31/11**Revision(s): **02/03/12 Δ 1**Item Number: **L1-807A-SG**Item Description: **Armchair- Custom**Area Name: **Level 1**

Item Quantity:

Manufacturer: By Custom Furniture ManufacturerSource: By Custom Furniture Manufacturer

Instructions:

- 5 All upholstered seams are to be double machine stitched with pre-shrunk threads.
- 6 All upholstered items will be framed using hardwood solids only.
- 7 All upholstered items will be finished as indicated on the approved shop drawings and specifications.
- 8 All Cuttings for Approval (CFA's) are to be sent directly to the Interior Designer by the vendor.
- 9 Cushions will have non-rusting concealed zipper closures.
- 10 For all loose FF&E items, the Procurement Agent (or, in the absence of such Agent, the Fabricator) is responsible for obtaining site dimensions so as to ensure that all pieces can be successfully delivered to the final project location
- 11 as outlined in Yabu Pushelberg's drawings.

GENERAL NOTES 说明

1. CONTRACTOR TO SUBMIT SHOP
DRAWINGS FOR DESIGNER'S APPROVAL
PRIOR TO FABRICATION.

2. UPHOLSTERED TO BE

FB37

3. METAL TO BE

ML2

4. CONTRACTOR TO PROVIDE FLAT,
CONCEALED LEVELERS AS REQ'D.

5. CONTRACTOR TO VERIFY STRUCTURAL
STABILITY.

ISSUE 出图

ISSUE DATE 出图日期

NO.	DESCRIPTION	DATE
1	ISSUED FOR 100% COORDINATION	05.31.2011
2	REVISION	02.03.2012

REVISION 修正 REVISION DATE 修正日期

PROJECT 项目 PROJECT NO. 09026
项目编号 项目编号

WALDORF=ASTORIA BEIJING

DRAWING 图纸

DRAWING NO.
图纸编号

LEVEL 1
LOBBY BAR
ARMCHAIR

L1-807A-SG
1 OF 2

SCALE 比例

AS NOTED

DRAWN BY 制图
AL

DATE 日期

MAY, 2011

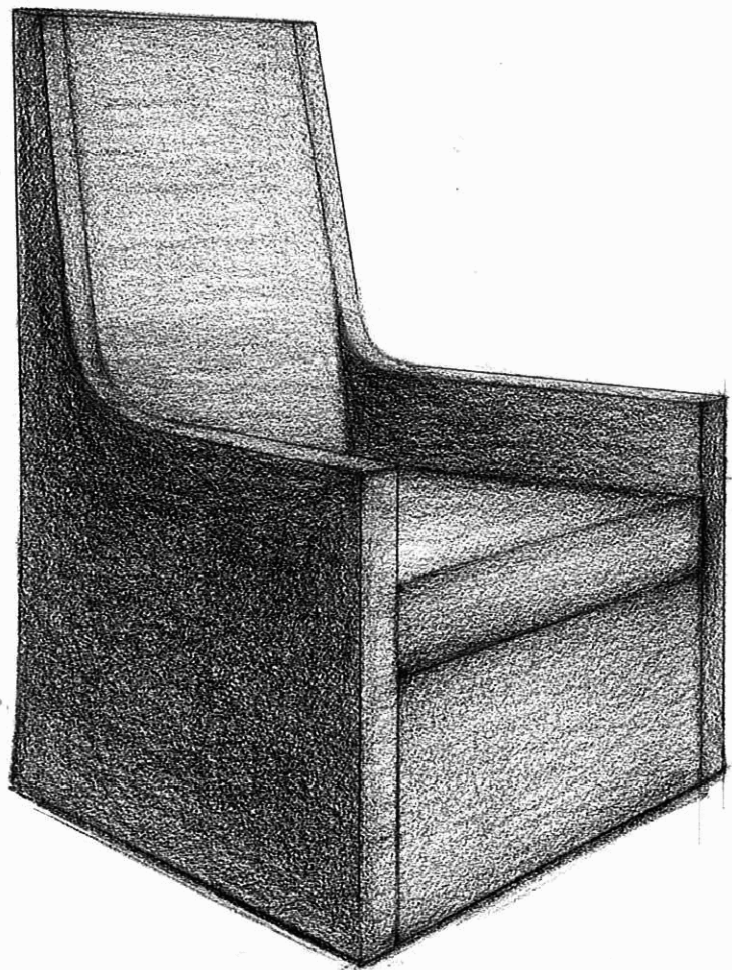
CHECKED BY 校正
AM/WM/MM

UPHOLSTERY TO BE MEDIUM-SOFT DENSITY FOAM OF A 7LB.
TO 10LB. I.L.D. (INTERNAL LOAD DEFLECTION), 1.5LB MINIMUM
DENSITY.
THIS IS COMBINED WITH A LOOSE POLYESTER FIBER COVER
WITH A DACRON LAYER.

INTERNAL CONSTRUCTION MUST BE FABRICATED FROM
STRAIGHT MILLED STOCK.
SEAT AND BACK RAILS ARE TO USE 1 1/8" (2.9 CM) THICK
MILLED STOCK.

FRAME COMPONENTS ARE TO BE JOINED USING DOUBLE
DOWELS, SCREWED AND GLUED TO ASSURE A TIGHT, STRONG,
AND LONG-LASTING JOINT.
JOINTS ARE TO BE GLUED AND SCREWED IN TWO DIRECTIONS.
ALL WORK TO BE CORNER BLOCKED.

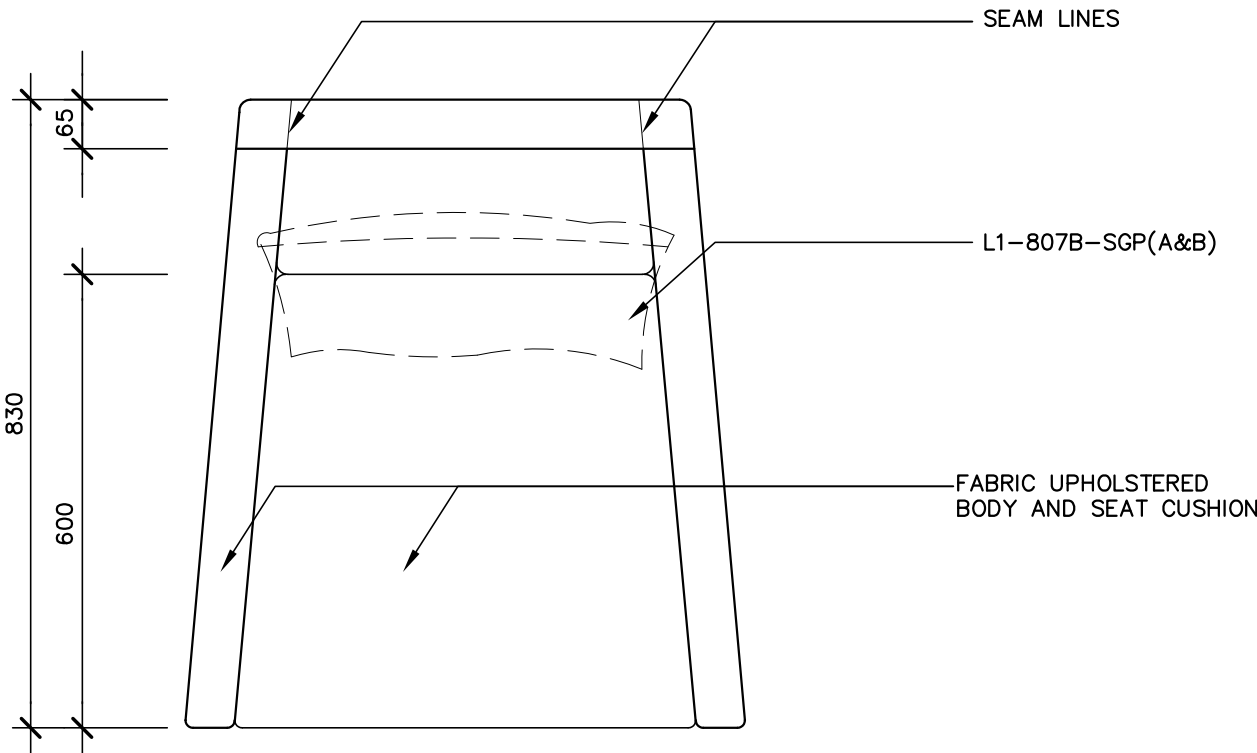
THESE NOTES ARE FOR DESIGN INTENT ONLY. FABRICATOR
MUST COORDINATE DIRECTLY WITH DESIGNER PRIOR TO
PROCEEDING WITH WORK.



1A

SKETCH

SCALE: NTS



1B

PLAN VIEW

SCALE: 1:10

GENERAL NOTES 说明

1. CONTRACTOR TO SUBMIT SHOP DRAWINGS FOR DESIGNER'S APPROVAL PRIOR TO FABRICATION.
2. UPHOLSTERED TO BE FB37
3. METAL TO BE ML2
4. CONTRACTOR TO PROVIDE FLAT, CONCEALED LEVELERS AS REQ'D.
5. CONTRACTOR TO VERIFY STRUCTURAL STABILITY.

ISSUE 出图 ISSUE DATE 出图日期

NO.	DESCRIPTION	DATE
1	ISSUED FOR 100% COORDINATION	05.31.2011
2	REVISION	02.03.2012

REVISION 修正 REVISION DATE 修正日期

PROJECT 项目 PROJECT NO. 09026
项目编号

WALDORF=ASTORIA BEIJING

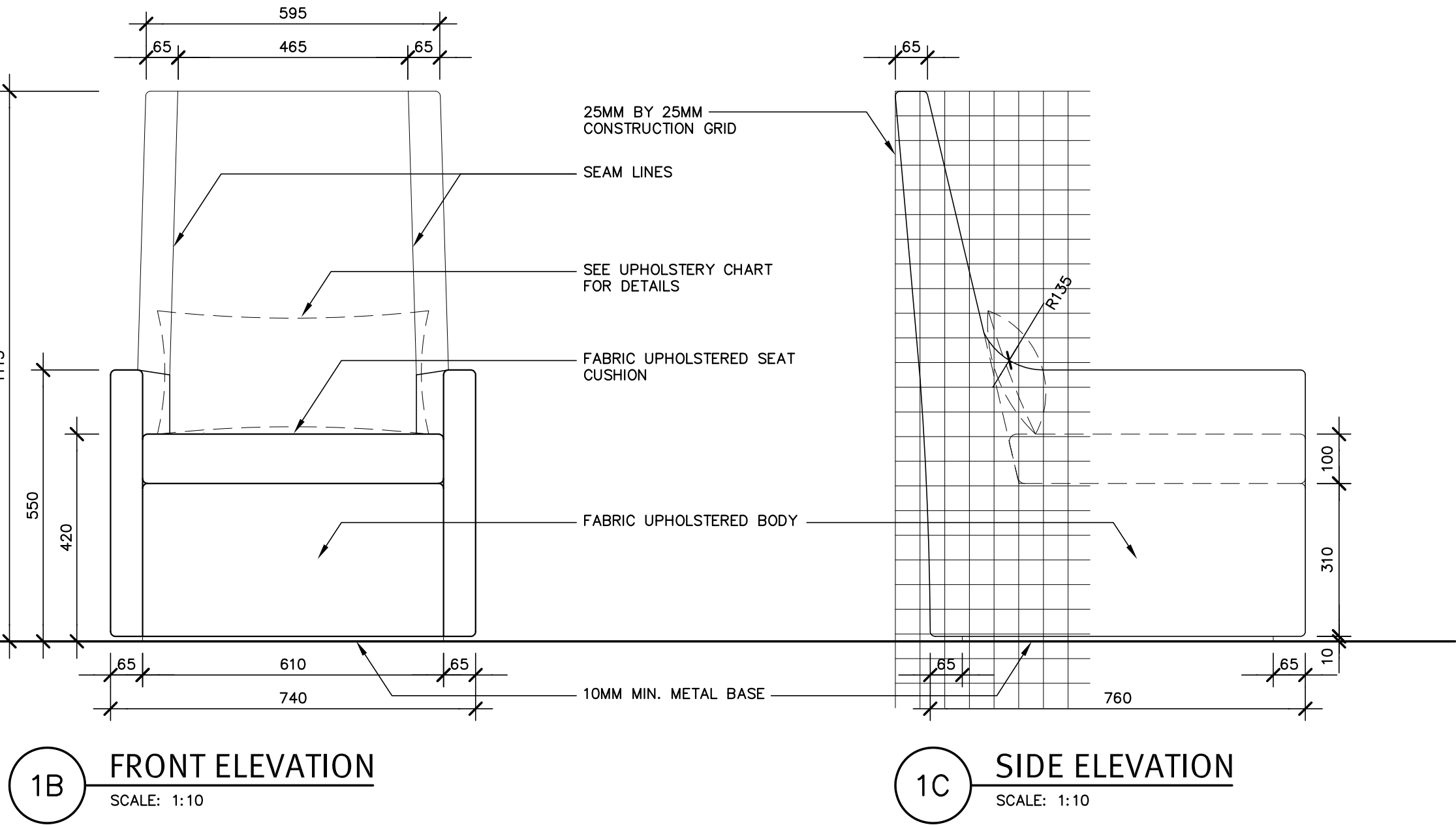
DRAWING 图纸 DRAWING NO.
图纸编号

LEVEL 1 L1-807A-SG
LOBBY BAR 2 OF 2
ARMCHAIR

SCALE 比例 DATE 日期

AS NOTED MAY, 2011

DRAWN BY 制图 CHECKED BY 校正
AL AM/MM/MM



Project Name: **WALDORF ASTORIA- BEIJING**Project #: **09026**Issue Date: **05/31/11**Revision(s): **02/03/12** **Δ 1**
Revised fabricItem Number: **L1-807A.1-SGP**Item Description: **Throw Pillow- Custom**Area Name: **Level 1**

Item Quantity:

Manufacturer: By Custom Pillow Fabricator

Source: By Custom Pillow Fabricator

Address:

Address:

Phone:

Phone:

Fax:

Fax:

Contact:

Contact:

E-mail:

E-mail:

Web:

Web:

Model Name: Custom Throw Pillow

Description: Knife Edge Pillow
Pillow Filling = Soft Dacron
Removable fabric cover to have non-rusting
concealed zipper closure

Dimensions: 250mm x 500mm x 150mm thick(when filled)

Finish References: FB-34 Wishbone- / Lilac / Coffee / 10098/07 -

Notes: Quantity= 1 per Armchair

Required Item(s) for Designer Approval Prior to Fabrication:

Prepared By: CG

☐ Seaming Diagram
 ☐ Strike-Off
 ☐ Finish Sample
 ☒ Cutting
 ☐ Shop Dwgs
 ☐ Prototype
 ☐ Flame Certificate

Instructions:

- 1 All Cuttings for Approval (CFA's) are to be sent directly to the Interior Designer by the vendor.
- 2 Loose cushions will be covered with a double layer of Dacron, muslin fabric and then C.O.M.
- 3 Cushions will have non-rusting concealed zipper closures.
- 4 Outdoor throw pillow fill must be 100% dri-fast foam and is to be provided in a permanent cotton fabric casing with a removable outer cover complete with a concealed rust proof zipper.

Project Name: **WALDORF ASTORIA- BEIJING**Project #: **09026**Issue Date: **05/31/11**Revision(s): **02/03/12** **Δ 1**
Revised woodItem Number: **L1-808-SG**Item Description: **Sofa- Custom**Area Name: **Level 1**

Item Quantity:

Manufacturer: By Custom Furniture Manufacturer

Source: By Custom Furniture Manufacturer

Address:

Address:

Phone:

Phone:

Fax:

Fax:

Contact:

Contact:

E-mail:

E-mail:

Web:

Web:

Description: Custom Sofa
Refer to drawing L1-808-SG for design detailsFinish References: FB-36 Shaker / Vagary / 92509-11 -
WD-31 Sapele / Ebonized / 10% Sheen -Notes: Requires custom throw pillows (by Others):
L1-808.1-SGP
L1-808.2-SGP
Refer to FFE Specifications for details

Location= Lobby Lounge

Required Item(s) for Designer Approval Prior to Fabrication:

Prepared By: CG

☐ Seaming Diagram
 ☐ Strike-Off
 ☐ Finish Sample
 ☒ Cutting
 ☒ Shop Dwgs
 ☐ Prototype
 ☐ Flame Certificate

Instructions:

- 1 Any materials used must be suitable for use in location specified and varying climatic situations.
- 2 Vendors are obligated to ensure custom designed seating is contract quality and appropriate for the use intended.
- 3 All items are to be mill fabricated according to the size and design indicated on the approved shop drawings.
- 4 Legs and bases must be made of wood solids.
- 5 All upholstered seams are to be double machine stitched with pre-shrunk threads.

Project Name: **WALDORF ASTORIA- BEIJING**
Project #: **09026**
Issue Date: **05/31/11**
Revision(s): **02/03/12 Δ 1**

Item Number: **L1-808-SG**
Item Description: **Sofa- Custom**
Area Name: **Level 1**

Item Quantity:

Manufacturer: By Custom Furniture Manufacturer Source: By Custom Furniture Manufacturer

Instructions:

- 6 All upholstered items will be framed using hardwood solids only.
- 7 All upholstered items will be finished as indicated on the approved shop drawings and specifications.
- 8 All Cuttings for Approval (CFA's) are to be sent directly to the Interior Designer by the vendor.
- 9 Cushions will have non-rusting concealed zipper closures.
- 10 For all loose FF&E items, the Procurement Agent (or, in the absence of such Agent, the Fabricator) is responsible for obtaining site dimensions so as to ensure that all pieces can be successfully delivered to the final project location
- 11 as outlined in Yabu Pushelberg's drawings.

GENERAL NOTES 说明

1. CONTRACTOR TO SUBMIT SHOP DRAWINGS FOR DESIGNER'S APPROVAL PRIOR TO FABRICATION.
2. UPHOLSTERED FABRIC TO BE **FB36**
3. WOOD TO BE **WD31**
4. CONTRACTOR TO PROVIDE FLAT, CONCEALED LEVELERS AS REQ'D.
5. CONTRACTOR TO VERIFY STRUCTURAL STABILITY.

ISSUE 出图 ISSUE DATE 出图日期

UPHOLSTERY TO BE MEDIUM-SOFT DENSITY FOAM OF A 7LB. TO 10LB. I.L.D. (INTERNAL LOAD DEFLECTION), 1.5LB MINIMUM DENSITY.
THIS IS COMBINED WITH A LOOSE POLYESTER FIBER COVER WITH A DACRON LAYER.

INTERNAL CONSTRUCTION MUST BE FABRICATED FROM STRAIGHT MILLED STOCK.
SEAT AND BACK RAILS ARE TO USE 1 1/8" (2.9 CM) THICK MILLED STOCK.

FRAME COMPONENTS ARE TO BE JOINED USING DOUBLE DOWELS, SCREWED AND GLUED TO ASSURE A TIGHT, STRONG, AND LONG-LASTING JOINT.
JOINTS ARE TO BE GLUED AND SCREWED IN TWO DIRECTIONS.
ALL WORK TO BE CORNER BLOCKED.

THESE NOTES ARE FOR DESIGN INTENT ONLY. FABRICATOR MUST COORDINATE DIRECTLY WITH DESIGNER PRIOR TO PROCEEDING WITH WORK.

NO.	DESCRIPTION	DATE
1	ISSUED FOR 100% COORDINATION	05.31.2011

REVISION 修正 REVISION DATE 修正日期

PROJECT 项目 PROJECT NO. 09026
项目编号

WALDORF=ASTORIA BEIJING

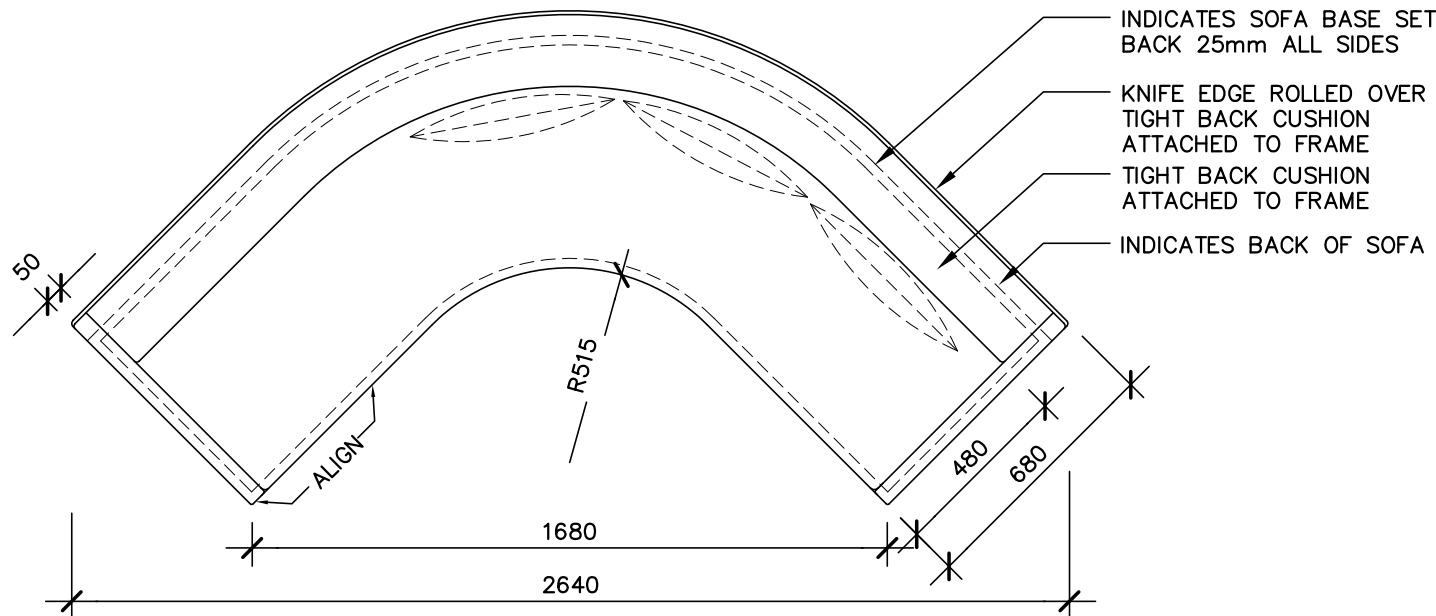
DRAWING 图纸 DRAWING NO. L1-808-SG
图纸编号 1 OF 1

LEVEL 1
LOBBY SALON LOUNGE
SOFA

SCALE 比例 DATE 日期

AS NOTED MAY, 2011

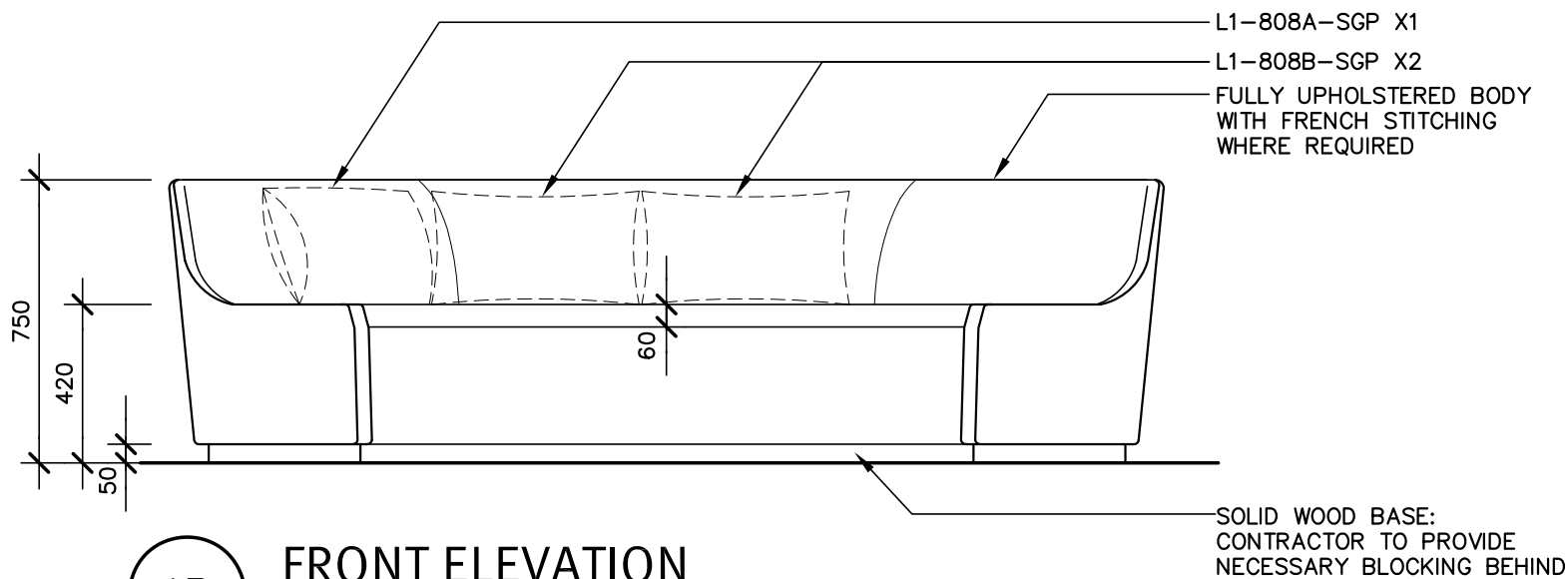
DRAWN BY 制图 CHECKED BY 校正
AL AM/WM/MM



1A

PLAN VIEW

SCALE: 1:20



1B

FRONT ELEVATION

SCALE: 1:20

1C

REFERENCE IMAGE

SCALE: NTS



Project Name: **WALDORF ASTORIA- BEIJING**Project #: **09026**Issue Date: **05/31/11**Revision(s): **02/03/12** **Δ 1**
revised woodItem Number: **L1-812-SG**Item Description: **Barstool- Custom**Area Name: **Level 1**

Item Quantity:

Manufacturer: By Custom Furniture Manufacturer

Source: By Custom Furniture Manufacturer

Address:

Address:

Phone:

Phone:

Fax:

Fax:

Contact:

Contact:

E-mail:

E-mail:

Web:

Web:

Description: Custom Barstool
Refer to drawing L1-812-SG for design detailsFinish References: FB-43 Nottingham Metallic / Platinum -
WD-31 Sapele / Ebonized / 10% Sheen -

Notes: Location= Lobby Bar

Required Item(s) for Designer Approval Prior to Fabrication:

Prepared By: CG

☐ Seaming Diagram
 ☐ Strike-Off
 ☒ Finish Sample
 ☒ Cutting
 ☒ Shop Dwgs
 ☐ Prototype
 ☐ Flame Certificate

Instructions:

- 1 Any materials used must be suitable for use in location specified and varying climatic situations.
- 2 Vendors are obligated to ensure custom designed seating is contract quality and appropriate for the use intended.
- 3 All items are to be mill fabricated according to the size and design indicated on the approved shop drawings.
- 4 Legs and bases must be made of wood solids.
- 5 All upholstered seams are to be double machine stitched with pre-shrunk threads.

Project Name: **WALDORF ASTORIA- BEIJING**Project #: **09026**Issue Date: **05/31/11**Revision(s): **02/03/12 Δ 1**Item Number: **L1-812-SG**Item Description: **Barstool- Custom**Area Name: **Level 1**

Item Quantity:

Manufacturer: By Custom Furniture ManufacturerSource: By Custom Furniture Manufacturer

Instructions:

- 6 All upholstered items will be framed using hardwood solids only.
- 7 All upholstered items will be finished as indicated on the approved shop drawings and specifications.
- 8 All Cuttings for Approval (CFA's) are to be sent directly to the Interior Designer by the vendor.
- 9 Cushions will have non-rusting concealed zipper closures.
- 10 For all loose FF&E items, the Procurement Agent (or, in the absence of such Agent, the Fabricator) is responsible for obtaining site dimensions so as to ensure that all pieces can be successfully delivered to the final project location
- 11 as outlined in Yabu Pushelberg's drawings.

YABUPUSHELBERG

55 BOOTH AVENUE TORONTO ONTARIO CANADA
M4M 2M3 TELEPHONE 416.778.9779 FAX 416.778.9747
4F-138 SPRING STREET NEW YORK NEW YORK USA 10012-3854
TELEPHONE 212.226.0808 FAX 212.226.0666
EMAIL DESIGN@YABUPUSHELBERG.COM

GENERAL NOTES 说明

- CONTRACTOR TO SUBMIT SHOP DRAWINGS FOR DESIGNER'S APPROVAL PRIOR TO FABRICATION
- ALL WOOD TO BE WD31
- ALL LEATHER TO BE FB43
- CONTRACTOR TO PROVIDE FLAT, CONCEALED LEVELERS AS REQ'D.
- CONTRACTOR TO VERIFY STRUCTURAL STABILITY.

ISSUE 出图 ISSUE DATE 出图日期

NO.	DESCRIPTION	DATE
1	ISSUED FOR 100% COORDINATION	05.31.2011

REVISION 修正 REVISION DATE 修正日期

PROJECT 项目 PROJECT NO. 09026
项目编号

WALDORF=ASTORIA BEIJING

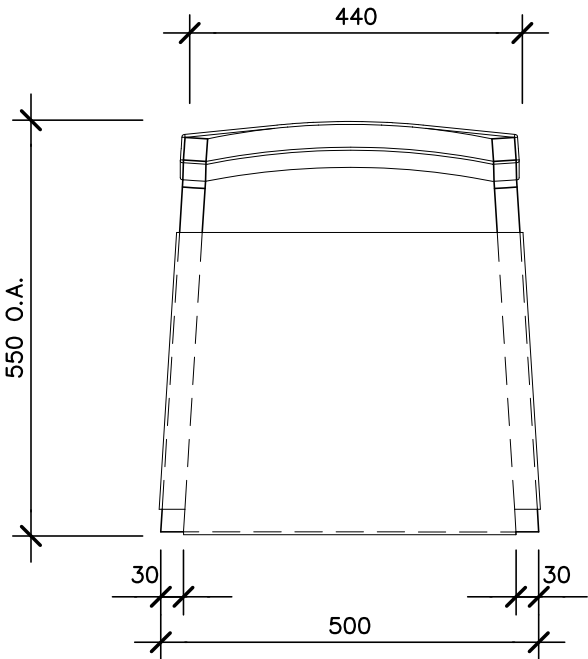
DRAWING 图纸 DRAWING NO. L1-812-SG
图纸编号 1 OF 1

LEVEL 1
LOBBY BAR
BARSTOOL

SCALE 比例 DATE 日期

AS NOTED MAY, 2011

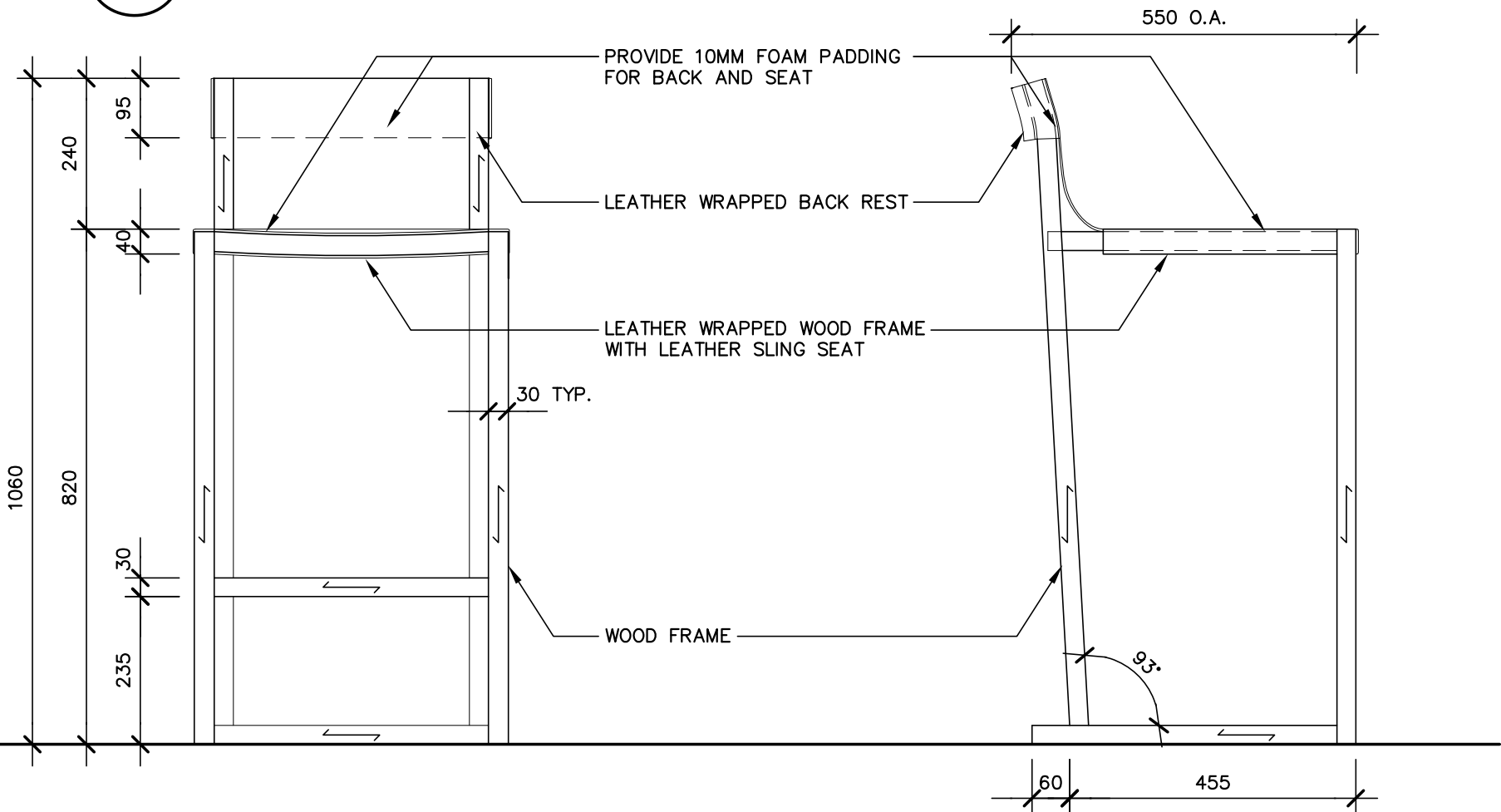
DRAWN BY 制图 CHECKED BY 校正
AL AM/WM/MM



1A

PLAN VIEW

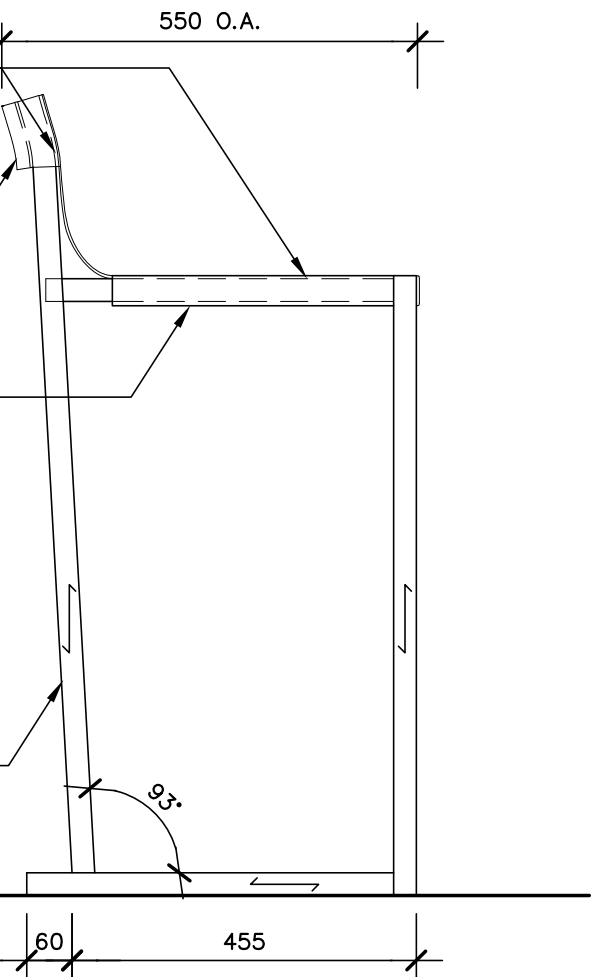
SCALE: 1:10



1B

FRONT ELEVATION

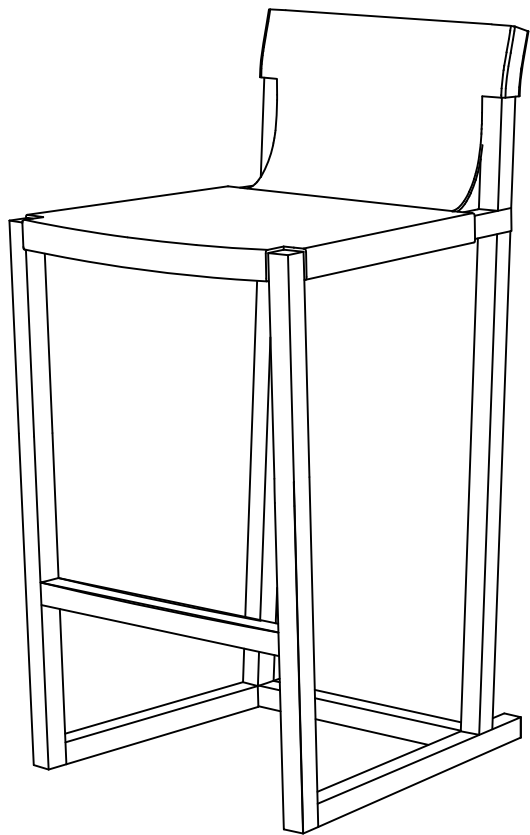
SCALE: 1:10



1C

SIDE ELEVATION

SCALE: 1:10



1D

ISOMETRIC

SCALE: 1:1

Project Name: **WALDORF ASTORIA- BEIJING**Project #: **09026**Item Number: **L1-900-WT**Item Description: **Window Treatment- Motorized Sheer Drapery**Issue Date: **05/31/11**Area Name: **Level 1**Revision(s): **02/03/12** **Δ 1**
Fabric & locations added

Item Quantity:

Manufacturer: By Custom Drapery Manufacturer

Source: By Custom Drapery Manufacturer

Address:

Address:

Phone:

Phone:

Fax:

Fax:

Contact:

Contact:

E-mail:

E-mail:

Web:

Web:

Description: Custom Motorized Sheer Drapery
Refer to drawing L1-900-WT for details

Top Treatment Style: S- Fold

Fabric Details Fabric= FB77 & FB78
Refer to Finishes specificationsHardware= H207
Refer to Hardware Specifications

Notes: Location= Brasserie / Lobby Bar / Lounge / Retail

Required Item(s) for Designer Approval Prior to Fabrication:

Prepared By: CG

☐ Seaming Diagram
 ☐ Strike-Off
 ☐ Finish Sample
 ☒ Cutting
 ☒ Shop Dwgs
 ☐ Prototype
 ☐ Flame Certificate

Instructions:

- 1 Vendors / Installers are to verify the quantity for all materials required.
- 2 Parallel tracks are to be used, overlapping a minimum of 15 mm (6") in the centre to ensure blackout is achieved, where blackout is required.
- 3 Clear batons are recommended for all operable drapery and casements, unless indicated otherwise. Height of the batons will be coordinated with the window heights. Alternatives will be reviewed and approved by Designer.
- 4 All drapery hems will be blind stitched.

Project Name: **WALDORF ASTORIA- BEIJING**

Project #: **09026**

Issue Date: **05/31/11**

Revision(s): **02/03/12 Δ 1**

Item Number: **L1-900-WT**

Item Description: **Window Treatment- Motorized Sheer Drapery**

Area Name: **Level 1**

Item Quantity:

Manufacturer: By Custom Drapery Manufacturer

Source: By Custom Drapery Manufacturer

Instructions:

- 5 All hems will be weighted with non-rusting weights appropriately specified for the fabric and location.
- 6 Finished length to be a maximum of 6mm (1/4") A.F.F., to provide blackout, unless indicated otherwise.
- 7 Bottom and top hems to be 13 mm (5").
- 8 Specified drapery fabrics must be stable and pre-shrunk.
- 9 Drapery lining / interlining to match base colour of specified decorative fabric. Custom Drapery Fabricator to provide sample for Designer's approval prior to proceeding with work.
- 10 Where specified, operable overdrape drapery must be blackout lined. When a split is used, the front drape must overlap the back drape 15 mm (6").
- 11 Side seams are to be 38 mm (1 1/2") with lining held back 25 mm (1") from the face fabric.
- 12 Single weights are to be used at the bottom hems. Weights are to be non-rusting.
- 13 Typically blackout drapery is part of the overdrape treatment. When design warrants separate operable blackout lined drapes, these will overlap 150 mm (6"). The drape closest to the headboard will overlap.
- 14 Sheers will be split as per the overdrape and be an operable casement.
- 15 Roman blinds will be fully operable and lined. The cord must be secured.
- 16 Fabrics or specified materials must pass NFPA 701-99.
- 17 When drapery is specified, under-drapery must be lined (double faced, contrasting or complementary fabric) when visible from the outside.
- 18 For all loose FF&E items, the Procurement Agent (or, in the absence of such Agent, the Fabricator) is responsible for obtaining site dimensions so as to ensure that all pieces can be successfully delivered to the final project location
- 19 as outlined in Yabu Pushelberg's drawings.

55 BOOTH AVENUE TORONTO ONTARIO CANADA
M4M 2M3 TELEPHONE 416.778.9779 FAX 416.778.9747

4F-138 SPRING STREET NEW YORK NEW YORK USA 10012-3854
TELEPHONE 212.226.0808 FAX 212.226.0666

EMAIL DESIGN@YABUPUSHELBERG.COM

1. CONTRACTOR TO SUBMIT MOCK-UP OR SHOP DWGS. FOR DESIGNER'S APPROVAL PRIOR TO PROCEEDING TO WORK 承包商在进行工作前, 提交样品或安装图供设计方审核

3. SHEER FABRIC TO BE FB79,
UNLESS OTHERWISE NOTED

.....

ISSUE	ISSUE DATE
-------	------------

NO.	DESCRIPTION	DATE
1	ISSUED FOR 100% COORDINATION	06.02.2011

PROJECT PROJECT NO. 09026

WALDORF ASTORIA
BEIJING

DRAWING NO. **L1-900-WT**
1 OF 1

LEVEL 1
LOBBY LOUNGE&BAR/RETAIL
& BRASSERIE
S-FOLD DRAPERY

DRAWN BY
AC

CHECKED BY
WM



SCALE 1:20

1. ALL DRAPERIES SHOULD SKIM FINISHED FLOOR: 6MM 所有窗帘需距离地板饰面6毫米
2. HEADINGS: HEADING IS 100MM TRIPLE PLEAT WITH BLIND STITCHING 顶边为100毫米三折隐蔽缝绉
3. BOTTOM HEMS: TO BE WEIGHT TO MATCH FINISH OF FABRIC 底边加重，与布艺饰面相称
4. SIDE HEMS: 10MM SINGLE FOLD 侧边：100毫米单褶
5. FULLNESS: 240% 全幅：240%
6. ALL HEMS TO BE BLIND STITCHED 所有缝边均为隐蔽缝绉
7. ALL SPECIFIED FABRICS MUST RECEIVE CONFIRMATION FROM VENDOR THAT SHRINKAGE WILL NOT OCCUR 买家需保证所有列布艺不会缩水
8. OVERDRAPERY TO MUST BE RETURNED TO EDGE OF WALL AND ATTACHED WITH VELCRO

CONTRACTOR MUST CHECK AND VERIFY ALL JOB DIMENSIONS, DRAWINGS, DETAILS AND SPECIFICATIONS REPORT ANY DISCREPANCIES TO DESIGNERS BEFORE PROCEEDING WITH WORK

WALDORF ASTORIA HOTEL- BEIJING, CHINA / #09026
FFE SPECIFICATION INDEX (PUBLIC SPACES- LEVEL 2 (L2))
ISSUED FOR REVISION #2
2011 FEBRUARY 03

ITEM NO.	DESCRIPTION	PURCHASED / CUSTOM	ISSUE DATE	REVISION DATE
CASEGOODS (CG)				
L2 - 400 - CG	CORRIDOR - SIDE TABLE	CUSTOM	2011 MAY 31	
L2 - 401 - CG	VIP LOUNGE - SIDE TABLE	CUSTOM	2011 MAY 31	
L2 - 402 - CG	SPARE		2011 MAY 31	
L2 - 403A - CG	CORRIDOR - DISPLAY TABLE	CUSTOM	2011 MAY 31	
L2 - 403B - CG	CORRIDOR - DISPLAY TABLE	CUSTOM	2011 MAY 31	
L2 - 403C - CG	CORRIDOR - DISPLAY TABLE	CUSTOM	2011 MAY 31	
L2 - 404 - CG	ELEVATOR LOBBY - CREDENZA	CUSTOM	2011 MAY 31	
L2 - 405 - CG	CORRIDOR - DISPLAY TABLE	PURCHASED	2011 MAY 31	
L2 - 406 - CG	CORRIDOR - CABINET	CUSTOM	2011 MAY 31	2012 FEB 03
L2 - 407 - CG	CORRIDOR - SCREEN	CUSTOM	2011 MAY 31	
L2 - 408 - CG	MTG ROOMS - CONFERENCE TABLE	CUSTOM	2011 MAY 31	
L2 - 409 - CG	VIP LOUNGE - CREDENZA	CUSTOM	2011 MAY 31	
L2 - 410 - CG	CORRIDOR - CREDENZA	CUSTOM	2011 MAY 31	
L2 - 411 - CG	MTG ROOM - CREDENZA	CUSTOM	2011 MAY 31	
L2 - 412 - CG	VIP LOUNGE - COFFEE TABLE	CUSTOM	2011 MAY 31	
L2 - 413 - CG	PUBLIC W/C - MIRROR	CUSTOM	2012 FEB 06	2012 FEB 03
LIGHTING (LT)				
L2 - 500 - LT	VIP LOUNGE - FLOOR LAMP	PURCHASED	2011 MAY 31	
L2 - 501 - LT	VIP LOUNGE / MTG ROOMS - FLOOR LAMP	PURCHASED	2011 MAY 31	
L2 - 502 - LT	ELEVATOR LOBBY - TABLE LAMP	PURCHASED	2011 MAY 31	
L2 - 503 - LT	SPARE		2011 MAY 31	
L2 - 504 - LT	SPARE		2011 MAY 31	
L2 - 505 - LT	SPARE		2011 MAY 31	
L2 - 506 - LT	SPARE		2011 MAY 31	
L2 - 507 - LT	CORRIDOR - FLOOR LAMP	PURCHASED	2011 MAY 31	
SEATING (SG)				
L2 - 800 - SG	CORRIDOR - CHAIR	CUSTOM	2011 MAY 31	
L2 - 801 - SG	CORRIDOR - SOFA	CUSTOM	2011 MAY 31	
L2 - 802 - SG	MTG ROOMS - LOUNGE CHAIR	CUSTOM	2011 MAY 31	
L2 - 802.1 - SGP	- THROW PILLOW	CUSTOM	2011 MAY 31	
L2 - 803 - SG	MTG ROOMS - CONFERENCE CHAIR	CUSTOM	2011 MAY 31	
L2 - 804 - SG	SPARE		2011 MAY 31	
L2 - 805 - SG	SPARE		2011 MAY 31	
L2 - 806 - SG	SPARE		2011 MAY 31	
L2 - 807 - SG	VIP LOUNGE - HIGHBACK CHAIR	CUSTOM	2011 MAY 31	
L2 - 807.1 - SGP	- THROW PILLOW	CUSTOM	2011 MAY 31	
L2 - 808 - SG	VIP LOUNGE - SOFA	CUSTOM	2011 MAY 31	2011 AUG 05
L2 - 808.1 - SGP	- THROW PILLOW	CUSTOM	2011 MAY 31	
L2 - 808.2 - SGP	- THROW PILLOW	CUSTOM	2011 MAY 31	
L2 - 809 - SG	VIP LOUNGE - CHAIR	CUSTOM	2011 MAY 31	

Project Name: **WALDORF ASTORIA- BEIJING**Project #: **09026**Issue Date: **05/31/11**Revision(s): **02/03/12** **Δ 1**
Revised finishItem Number: **L2-406-CG**Item Description: **Cabinet- Custom**Area Name: **Level 2**

Item Quantity:

Manufacturer: By Custom Furniture Manufacturer

Address:

Source: By Custom Furniture Manufacturer

Address:

Phone:

Phone:

Fax:

Fax:

Contact:

Contact:

E-mail:

E-mail:

Web:

Web:

Description: Custom Cabinet
Refer to drawing L2-406-CG for design detailsFinish References: ML-06 SPARE - LEGS
ML-12 Brushed English Antique - PULL
ML-02 Metal USB-10 - TOP
WD-19 Hand Polished Black w/ Ochre Rubbed Edge -
CABINET

Notes: Location= Corridor

Required Item(s) for Designer Approval Prior to Fabrication:

Prepared By: CG

☐ Seaming Diagram
 ☐ Strike-Off
 ☒ Finish Sample
 ☐ Cutting
 ☒ Shop Dwgs
 ☐ Prototype
 ☐ Flame Certificate

Instructions:

- 1 Any materials used must be suitable for use in location specified and varying climatic situations.
- 2 All work is to be corner blocked, well fitted, double doweled, glued, and screwed into place. Joint glue must be of the best quality and any excess glue will be thoroughly cleaned.
- 3 All items are to be mill fabricated according to the size and design indicated on the approved shop drawings.
- 4 Legs and bases must be made of wood solids.
- 5 All drawer fronts will be as specified and should be made of lumber or veneer plywood.

Project Name: **WALDORF ASTORIA- BEIJING**
 Project #: **09026**
 Issue Date: **05/31/11**
 Revision(s): **02/03/12 Δ 1**

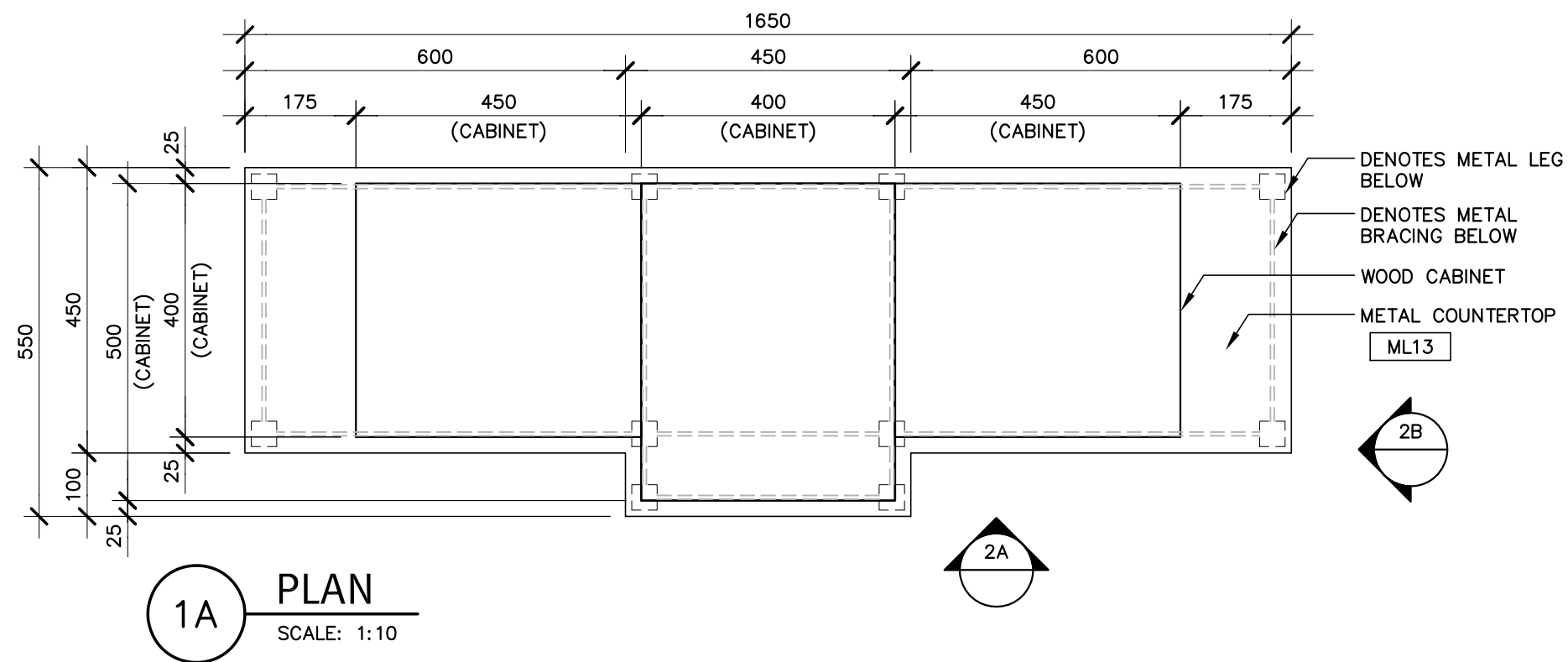
Item Number: **L2-406-CG**
 Item Description: **Cabinet- Custom**
 Area Name: **Level 2**

Item Quantity:

Manufacturer: By Custom Furniture Manufacturer Source: By Custom Furniture Manufacturer

Instructions:

- 6 Drawer sides, backs and sub fronts will be made of 13 mm (1/2") solid lumber or veneered plywood.
- 7 Drawer bottoms will be made of solid lumber or veneered plywood. Drawer bottoms may not be made of Masonite or particleboard.
- 8 Drawer sides will be dovetailed or butterfly jointed and glued under pressure. The dovetails will be milled true and even.
- 9 Drawer and door interiors must be veneered and finished to match the exterior of the unit.
- 10 Drawer and door interiors will be sanded smooth, lacquered and waxed.
- 11 All drawers will have a stop mechanism that is removable when required for repairs or access.
- 12 All cabinet doors will be as specified and should be made of 19 mm (3/4") lumber or veneered plywood or as required.
- 13 Cabinet door interiors must be veneered and finished to match the exterior of the unit.
- 14 All adjustable shelving will be made of solid wood or veneered plywood unless otherwise specified.
- 15 For all shelves, the top, bottom, and side edges must match the exterior of the unit.
- 16 All casegood hardware and accessories will be furnished and installed by the vendor and must be indicated on the shop drawings.
- 17 All drawers and pull out shelves will have concealed, undermounted hardware. Full extension, metal drawer glides or shelf slides with ball bearing nylon rollers are required. These should be self-closing and have stops.
- 18 All casegood and softgood legs and bases will have self-leveling adjustable nylon contract quality carpet glides, appropriate to the weight of the piece and the floor finish on which the casegood will be placed.
- 19 All glides and levelers will be non-rusting.
- 20 The casegood vendor will supply templates for all glass tops when supplied by others.
- 21 For all loose FF&E items, the Procurement Agent (or, in the absence of such Agent, the Fabricator) is responsible for obtaining site dimensions so as to ensure that all pieces can be successfully delivered to the final project location
- 22 as outlined in Yabu Pushelberg's drawings.



YABUPUSHELBERG

55 BOOTH AVENUE TORONTO ONTARIO CANADA
M4M 2M3 TELEPHONE 416.778.9779 FAX 416.778.9747
4F-138 SPRING STREET NEW YORK NEW YORK USA 10012-3854
TELEPHONE 212.226.0808 FAX 212.226.0666
EMAIL DESIGN@YABUPUSHELBERG.COM

GENERAL NOTES

1. MANUFACTURER TO SUBMIT SHOP DRAWINGS FOR DESIGNER'S APPROVAL PRIOR TO PROCEEDING WITH WORK.
2. MANUFACTURER TO SUBMIT MATERIAL SAMPLES FOR DESIGNER'S APPROVAL PRIOR TO PROCEEDING WITH WORK.
3. ALL CONSTRUCTION TO BE 20mm THK. MDF UNLESS OTHERWISE NOTED.
4. ALL WOOD TO BE WD19
5. ALL METAL TO BE ML6 UNLESS OTHERWISE NOTED.
6. ALL WELDS TO BE GROUND SMOOTH AND POLISHED WITHOUT SEAMS.

ISSUE ISSUE DATE

NO.	DESCRIPTION	DATE
1	ISSUED FOR 100% COORDINATION	05.31.2011
2	ISSUED FOR REVI	02.03.2012

REVISION REVISION DATE

PROJECT PROJECT NO. 09026

WALDORF ASTORIA
BEIJING

BEIJING, CHINA

DRAWING DRAWING NO.

L2-406-CG 1 OF 3

TEA CABINET
@ BREAKOUT / PRE-FUNCTION

SCALE DATE
AS NOTED MAY 31, 2011
DRAWN BY CHECKED BY
JS AM/WM

GENERAL NOTES

1. MANUFACTURER TO SUBMIT SHOP DRAWINGS FOR DESIGNER'S APPROVAL PRIOR TO PROCEEDING WITH WORK.
2. MANUFACTURER TO SUBMIT MATERIAL SAMPLES FOR DESIGNER'S APPROVAL PRIOR TO PROCEEDING WITH WORK.
3. ALL CONSTRUCTION TO BE 20mm THK. MDF UNLESS OTHERWISE NOTED.
4. ALL WOOD TO BE **WD19**
5. ALL METAL TO BE **ML2** UNLESS OTHERWISE NOTED.
6. ALL WELDS TO BE GROUND SMOOTH AND POLISHED WITHOUT SEAMS.

ISSUE ISSUE DATE

NO.	DESCRIPTION	DATE
1	ISSUED FOR 100% COORDINATION	05.31.2011
2	ISSUED FOR REVI	02.03.2012

REVISION REVISION DATE

PROJECT PROJECT NO. 09026

WALDORF ASTORIA
BEIJING

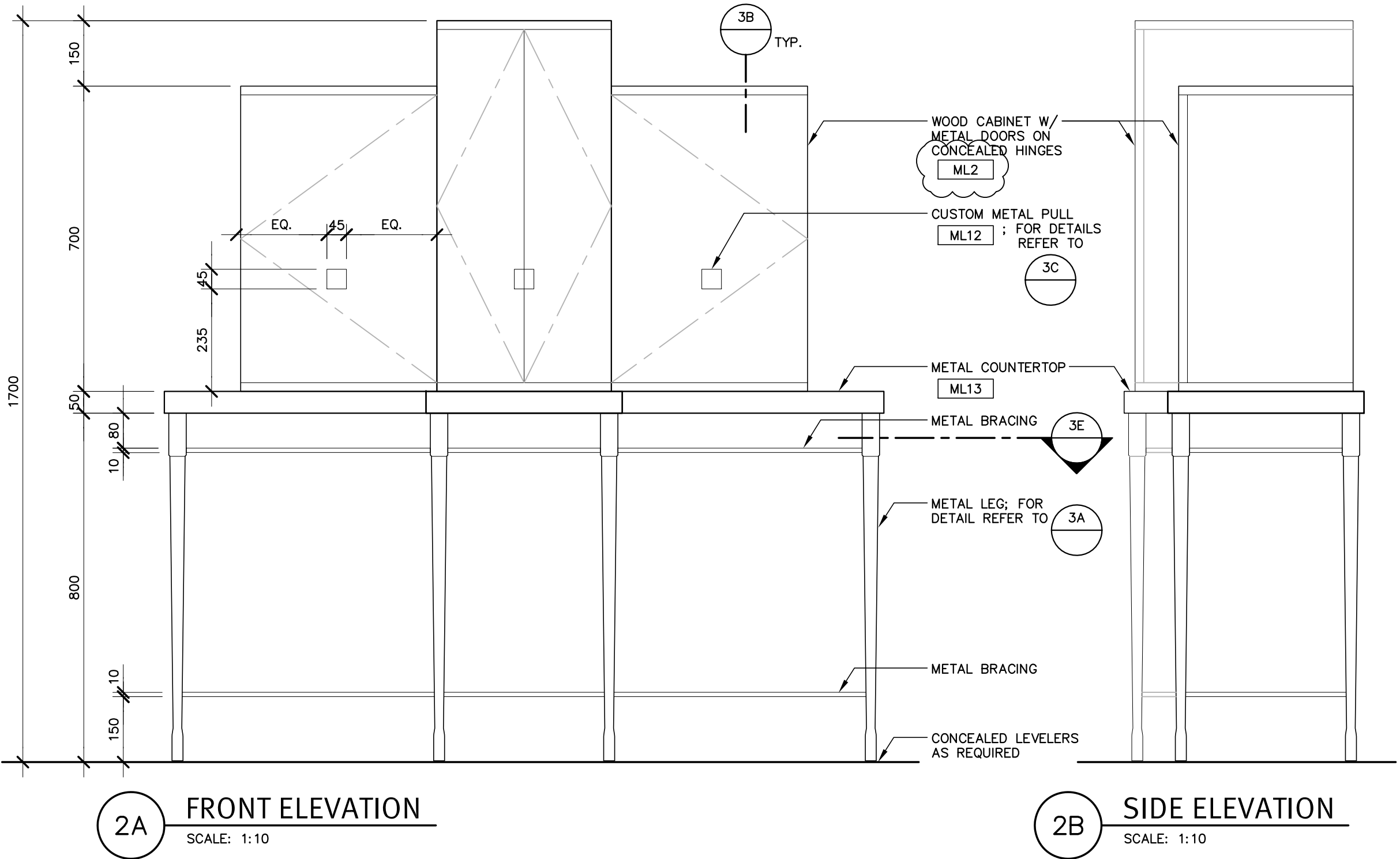
BEIJING, CHINA

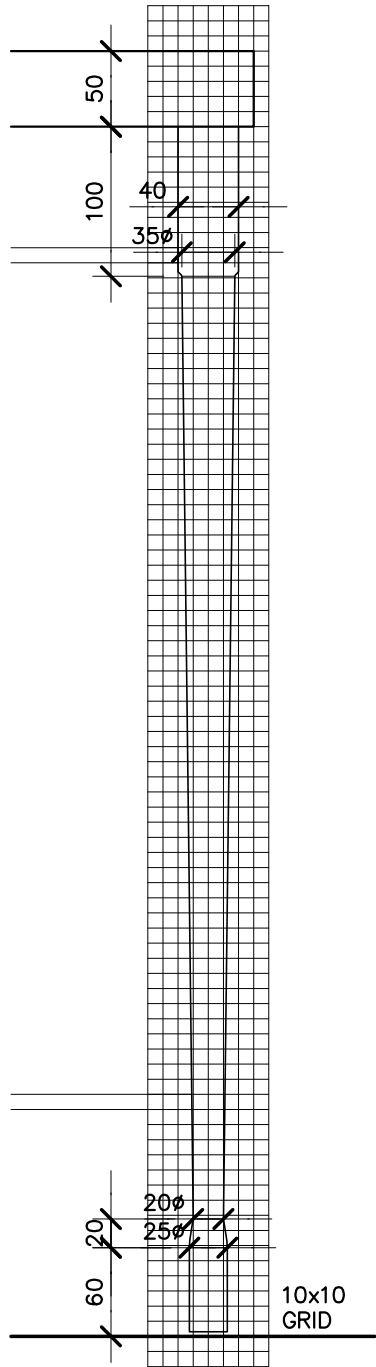
DRAWING DRAWING NO.

L2-406-CG 2 OF 3

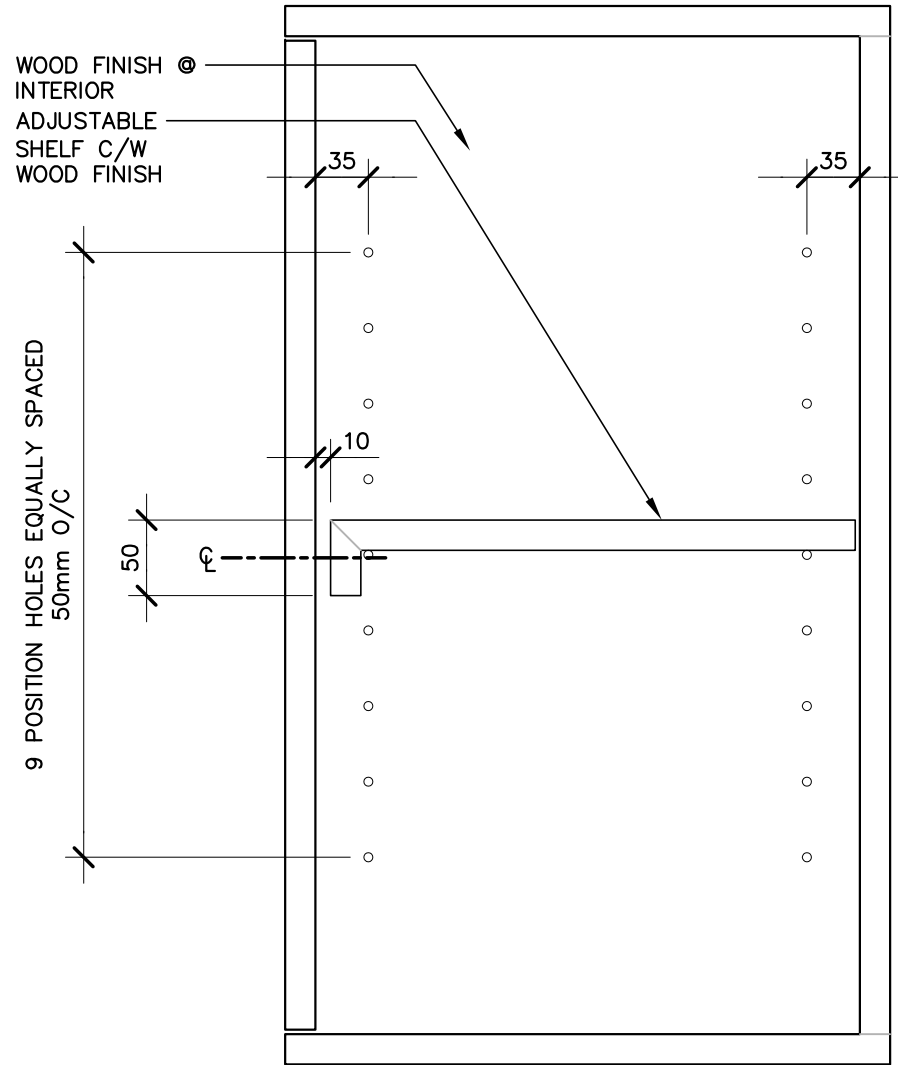
TEA CABINET
@ BREAKOUT / PRE-FUNCTION

SCALE DATE
AS NOTED MAY 31, 2011
DRAWN BY CHECKED BY
JS AM/WM

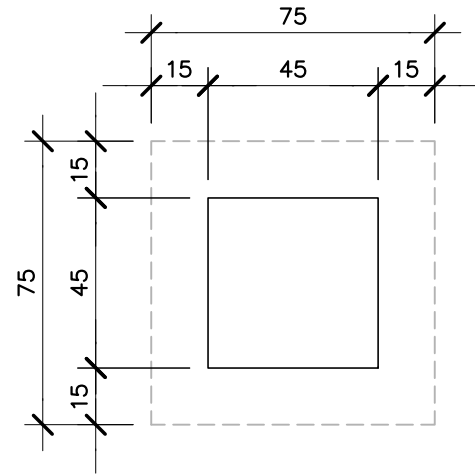




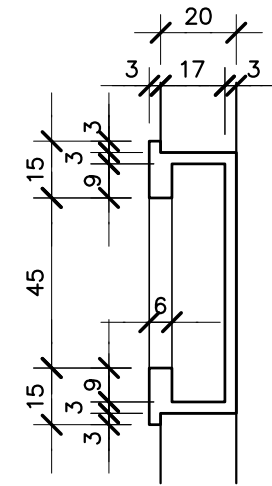
3A LEG DETAIL
SCALE: 1:5



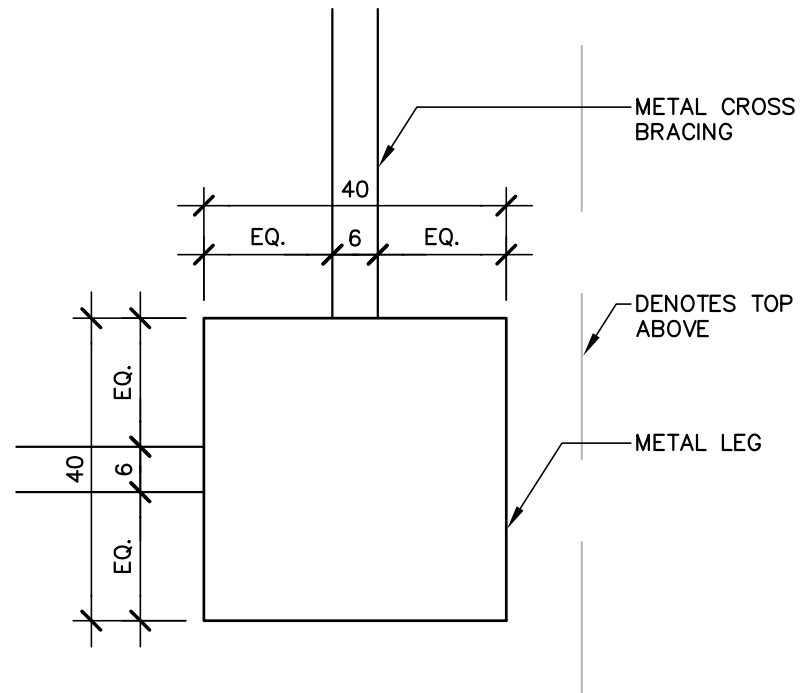
3B TYP. CABINET SECTION
SCALE: 1:5



3C CUSTOM PULL - ELEVATION
SCALE: 1:2



3D CUSTOM PULL - SECTION
SCALE: 1:2



3E SECTION @ LEG
SCALE: 1:1

YABUPUSHELBERG

55 BOOTH AVENUE TORONTO ONTARIO CANADA
M4M 2M3 TELEPHONE 416.778.9779 FAX 416.778.9747
4F-138 SPRING STREET NEW YORK NEW YORK USA 10012-3854
TELEPHONE 212.226.0808 FAX 212.226.0666
EMAIL DESIGN@YABUPUSHELBERG.COM

GENERAL NOTES

1. MANUFACTURER TO SUBMIT SHOP DRAWINGS FOR DESIGNER'S APPROVAL PRIOR TO PROCEEDING WITH WORK.
2. MANUFACTURER TO SUBMIT MATERIAL SAMPLES FOR DESIGNER'S APPROVAL PRIOR TO PROCEEDING WITH WORK.
3. ALL CONSTRUCTION TO BE 20mm THK. MDF UNLESS OTHERWISE NOTED.
4. ALL WOOD TO BE **WD19**
5. ALL METAL TO BE **ML2** UNLESS OTHERWISE NOTED.
6. ALL WELDS TO BE GROUND SMOOTH AND POLISHED WITHOUT SEAMS.

ISSUE ISSUE DATE

NO.	DESCRIPTION	DATE
1	ISSUED FOR 100% COORDINATION	05.31.2011
2	ISSUED FOR REVI	02.03.2012

REVISION REVISION DATE
PROJECT PROJECT NO. 09026

**WALDORF ASTORIA
BEIJING**

BEIJING, CHINA

DRAWING DRAWING NO.
L2-406-CG 3 OF 3

**TEA CABINET
@ BREAKOUT / PRE-FUNCTION**

SCALE DATE
AS NOTED MAY 31, 2011
DRAWN BY CHECKED BY
JS AM/WM

Project Name: **WALDORF ASTORIA- BEIJING**Project #: **09026**Issue Date: **02/03/12**

Revision(s):

Item Number: **L2-413-CG**Item Description: **Mirror- Custom**Area Name: **Level 2**

Item Quantity:

Manufacturer: By Millwork Contractor

Address:

Phone:

Fax:

Contact:

E-mail:

Web:

Source: By Millwork Contractor

Address:

Phone:

Fax:

Contact:

E-mail:

Web:

Description:

Custom Mirror

Refer to drawing L2-413-CG for design details

Finish References:

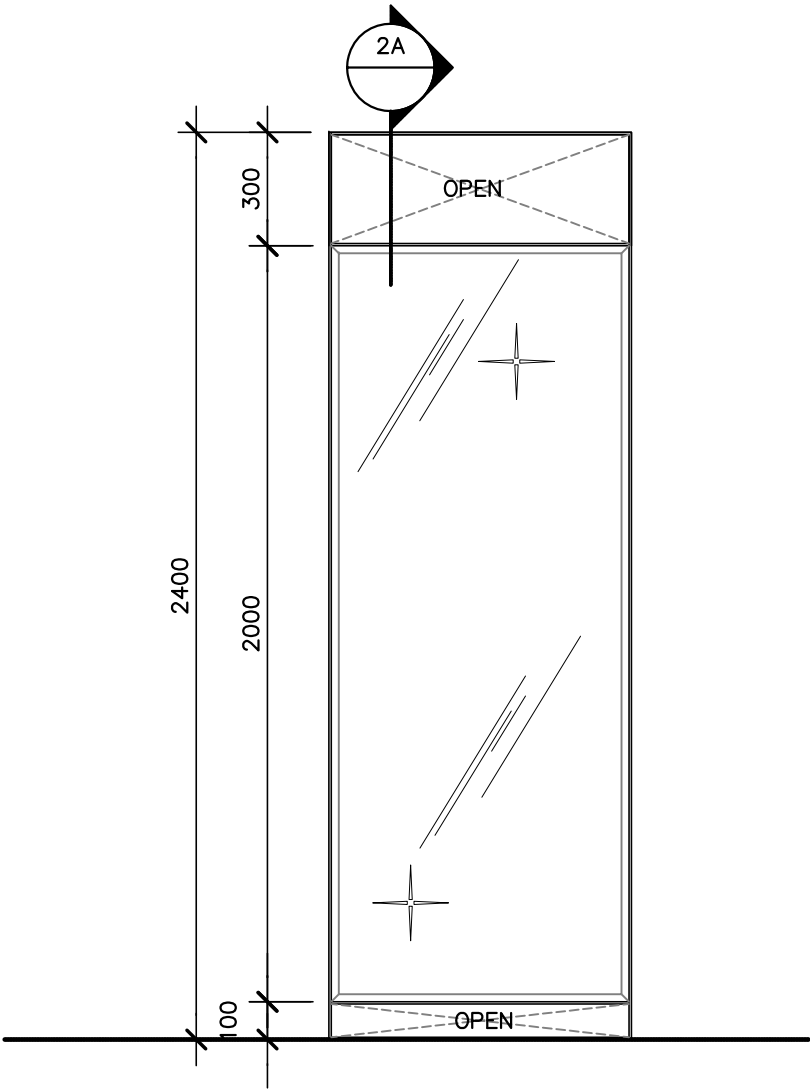
ML-01 Gun Metal (Steel substrate) -

MR--02 Clear Mirror / 20mm Bevel / 6mm Thick -

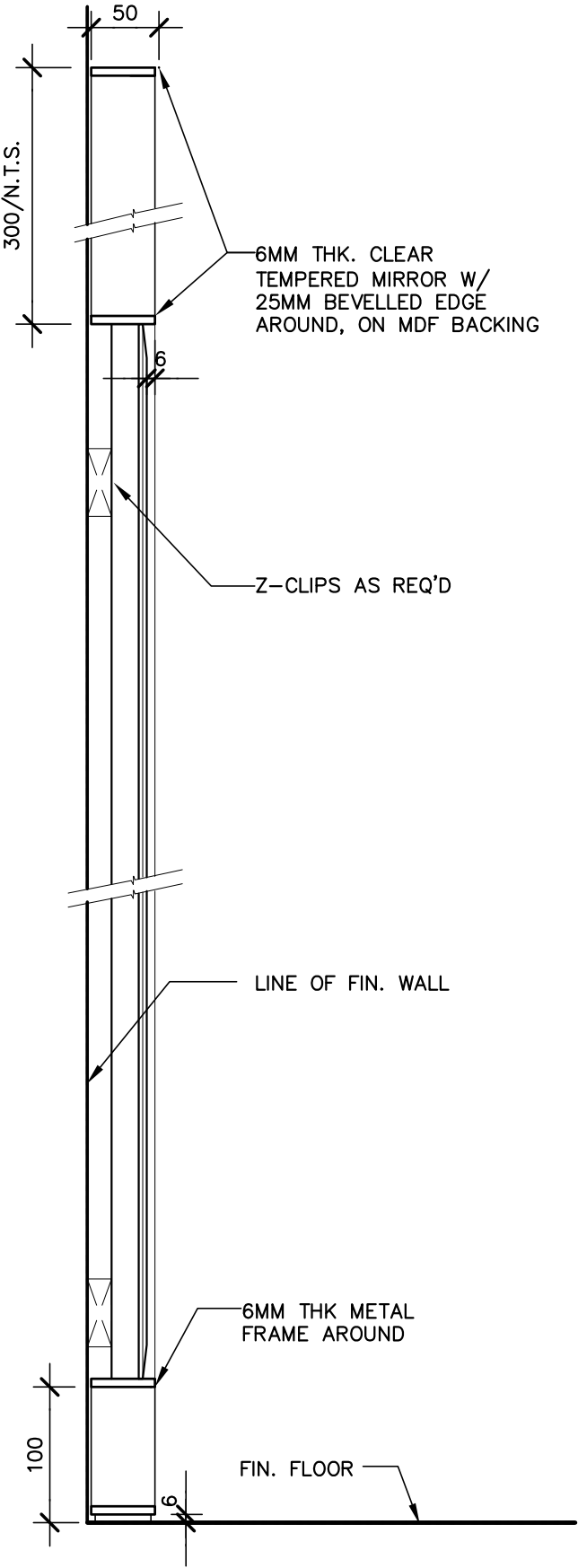
Required Item(s) for Designer Approval Prior to Fabrication:

Prepared By: HY

☐ Seaming Diagram ☐ Strike-Off ☒ Finish Sample ☐ Cutting ☒ Shop Dwgs ☐ Prototype ☐ Flame Certificate



1A FRONT ELEVATION
SCALE: 1:10



2A SECTION
SCALE: 1:5

YABUPUSHELBERG

55 BOOTH AVENUE TORONTO ONTARIO CANADA
M4M 2M3 TELEPHONE 416.778.9779 FAX 416.778.9747
4F-138 SPRING STREET NEW YORK NEW YORK USA 10012-3854
TELEPHONE 212.226.0808 FAX 212.226.0666
EMAIL DESIGN@YABUPUSHELBERG.COM

GENERAL NOTES 通用条款:

1. CONTRACTOR TO SUBMIT MOCK-UP OR SHOP DWGS. FOR DESIGNER'S APPROVAL PRIOR TO PROCEEDING TO WORK 承包商在进行工作前, 提交样品或安装图供设计方审核
2. ALL METAL ML01
3. ALL MIRROR MR01

ISSUE ISSUE DATE

NO.	DESCRIPTION	DATE
1	GENERAL REVISION 1	02.06.2012

REVISION REVISION DATE
PROJECT PROJECT NO. 09026

WALDORF ASTORIA
BEIJING

DRAWING DRAWING NO.
L2-413-CG 1 OF 1
PUBLIC WASH ROOM
FREESTANDING MIRROR

SCALE DATE
AS INDICATED MAY 15, 2011
DRAWN BY CHECKED BY
KC AM/MM/WM

WALDORF ASTORIA HOTEL- BEIJING, CHINA / #09026
FFE SPECIFICATION INDEX (PUBLIC SPACES- LEVEL 3 (L3))
ISSUED FOR SPECIFICATION REVISION #2
2012 FEBRUARY 03

ITEM NO.	DESCRIPTION	PURCHASED / CUSTOM	ISSUE DATE	REVISION DATE
AREA RUGS (AR)				
L3 - 100A - AR	CHINESE REST. LIVING RM	CUSTOM	2011 MAY 31	
L3 - 100B - AR	CHINESE REST. LIVING RM	CUSTOM	2011 MAY 31	
L3 - 100C - AR	CHINESE REST. LIVING RM	CUSTOM	2011 MAY 31	
L3 - 101A - AR	CHINESE REST. PRIVATE DINING	CUSTOM	2011 MAY 31	
L3 - 101B - AR	CHINESE REST. PRIVATE DINING	CUSTOM	2011 MAY 31	
L3 - 102 - AR	CHINESE REST. PRIVATE DINING VIP	CUSTOM	2011 MAY 31	
L3 - 103 - AR	CHINESE REST. RECEPTION	CUSTOM	2011 MAY 31	
CASEGOODS (CG)				
L3 - 400 - CG	HOME - BUTCHER BLOCK	CUSTOM	2011 MAY 31	2011 DEC 17
L3 - 401 - CG	HOME - COAT HOOK	CUSTOM	2011 MAY 31	2011 DEC 17
L3 - 402 - CG	WINEROOM - SIDE TABLE	CUSTOM	2011 MAY 31	
L3 - 403 - CG	WINEROOM - LONG TASTING TABLE	CUSTOM	2011 MAY 31	
L3 - 404 - CG	WINEROOM - TASTING TABLE	CUSTOM	2011 MAY 31	
L3 - 405A - CG	CHINESE REST.- DINING TABLE	CUSTOM	2011 MAY 31	
L3 - 405B - CG	CHINESE REST.- DINING TABLE	CUSTOM	2011 MAY 31	
L3 - 405C - CG	CHINESE REST.- DINING TABLE	CUSTOM	2011 MAY 31	
L3 - 405D - CG	CHINESE REST.- DINING TABLE	CUSTOM	2011 MAY 31	
L3 - 405E - CG	CHINESE REST.- DINING TABLE	CUSTOM	2011 MAY 31	
L3 - 406 - CG	CHINESE REST.- CONSOLE	CUSTOM	2011 MAY 31	
L3 - 407 - CG	CHINESE REST.- SIDE TABLE	CUSTOM	2011 MAY 31	
L3 - 408 - CG	CHINESE REST.- COFFEE TABLE	CUSTOM	2011 MAY 31	
L3 - 409 - CG	CHINESE REST.- CABINET	CUSTOM	2011 MAY 31	
L3 - 410 - CG	CHINESE REST.- SIDE TABLE	CUSTOM	2011 MAY 31	
L3 - 411 - CG	CHINESE REST.- SIDE TABLE	CUSTOM	2011 MAY 31	
L3 - 412 - CG	CHINESE REST.- SIDEBBOARD	CUSTOM	2011 MAY 31	
L3 - 413 - CG	HOME - SIDE TABLE	CUSTOM	2011 MAY 31	2011 DEC 17
L3 - 414 - CG	HOME - MIRROR	CUSTOM	2011 MAY 31	2011 DEC 17
L3 - 415 - CG	HOME - COFFEE TABLE	CUSTOM	2011 MAY 31	
L3 - 416 - CG	HOME - DINING TABLE	CUSTOM	2011 MAY 31	
L3 - 417 - CG	HOME - CONSOLE / CHEESE DISPLAY	CUSTOM	2011 MAY 31	2011 DEC 17
L3 - 418 - CG	HOME - CONSOLE	CUSTOM	2011 MAY 31	2011 DEC 17
L3 - 419 - CG	HOME - CONSOLE	CUSTOM	2011 MAY 31	2011 DEC 17
L3 - 420 - CG	DELETED - HOME - SIDE TABLE	CUSTOM	2011 MAY 31	2011 DEC 17
L3 - 421 - CG	HOME - STOOL	CUSTOM	2011 MAY 31	2011 DEC 17
L3 - 422 - CG	HOME - SIDE TABLE	CUSTOM	2011 MAY 31	2011 DEC 17
L3 - 423 - CG	HOME - SIDE TABLE	CUSTOM	2011 MAY 31	
L3 - 424A - CG	CHINESE REST. CONSOLE	CUSTOM	2011 MAY 31	
L3 - 424B - CG	CHINESE REST. CONSOLE	CUSTOM	2011 MAY 31	
L3 - 425 - CG	CHINESE REST. RECEPTION DESK	CUSTOM	2011 MAY 31	
LIGHTING (LT)				
L3 - 500 - LT	CHINESE REST. MAITRE D. PENDANT	PURCHASED	2011 MAY 31	2012 FEB 06
L3 - 501A - LT	CHINESE REST. CEILING PENDANT	PURCHASED	2011 MAY 31	
L3 - 501B - LT	CHINESE REST. CEILING PENDANT	PURCHASED	2011 MAY 31	
L3 - 502 - LT	CHINESE REST. WALL MOUNTED PENDANT	CUSTOM	2011 MAY 31	
L3 - 503 - LT	RECEPTION DESK LAMP	PURCHASED	2011 MAY 31	
L3 - 504 - LT	WASHROOM PENDANT	PURCHASED	2011 MAY 31	2012 FEB 06
L3 - 505 - LT	SPARE		2011 MAY 31	
L3 - 506 - LT	SPARE		2011 MAY 31	
L3 - 507 - LT	DELETED - HOME - WALL SCONCE	PURCHASED	2011 MAY 31	2011 DEC 17
L3 - 508 - LT	HOME - CEILING PENDANT	PURCHASED	2011 MAY 31	
L3 - 509 - LT	HOME - FLOOR LAMP	PURCHASED	2011 MAY 31	
L3 - 510 - LT	HOME - CEILING PENDANT - TERRANIUM	PURCHASED	2011 MAY 31	2011 DEC 17
L3 - 511 - LT	CHINESE RESTAURANT - MAITRE D CEILING PENDANT	PURCHASED		
SEATING (SG)				
L3 - 800 - SG	WINEROOM - ARMCHAIR	CUSTOM	2011 MAY 31	
L3 - 801 - SG	WINEROOM - BENCH	CUSTOM	2011 MAY 31	
L3 - 802 - SG	SPARE		2011 MAY 31	
L3 - 803 - SG	SPARE		2011 MAY 31	
L3 - 804A - SG	CHINESE REST. BANQUETTE	CUSTOM	2011 MAY 31	
L3 - 804B - SG	CHINESE REST. BANQUETTE	CUSTOM	2011 MAY 31	
L3 - 805 - SG	CHINESE REST. DINING CHAIRS	CUSTOM	2011 MAY 31	
L3 - 806 - SG	CHINESE REST. SOFA	CUSTOM	2011 MAY 31	

WALDORF ASTORIA HOTEL- BEIJING, CHINA / #09026
FFE SPECIFICATION INDEX (PUBLIC SPACES- LEVEL 3 (L3))
ISSUED FOR SPECIFICATION REVISION #2
2012 FEBRUARY 03

L3 - 807 - SG	HOME - ARMCHAIR	CUSTOM	2011 MAY 31	2011 DEC 17
L3 - 808 - SG	HOME - SOFA	CUSTOM	2011 MAY 31	2011 DEC 17
L3 808A SGP	- THROW PILLOW, 450 X 450	CUSTOM	2011 MAY 31	2011 DEC 17
L3 808B SGP	- THROW PILLOW, 550 X 550	CUSTOM	2011 MAY 31	2011 DEC 17
L3 - 809 - SG	HOME - ARMCHAIR	CUSTOM	2011 MAY 31	2011 DEC 17
L3 - 809 - SGP	- THROW PILLOW, 520 X 300	CUSTOM	2011 MAY 31	2011 DEC 17
L3 - 810 - SG	DELETED - HOME - ARMCHAIR	CUSTOM	2011 MAY 31	2011 DEC 17
L3 - 811 - SG	DELETED - HOME - ARMCHAIR	CUSTOM	2011 MAY 31	2011 DEC 17
L3 - 812 - SG	HOME - DINING CHAIR	CUSTOM	2011 MAY 31	2011 DEC 17
L3 - 813 - SG	HOME - DINING CHAIR	CUSTOM	2011 MAY 31	
L3 - 815 - SG	CHINESE REST. ARMCHAIR	CUSTOM	2011 MAY 31	
L3 - 816 - SG	CHINESE REST. PRIVATE DINING CHAIR	CUSTOM	2011 MAY 31	
WINDOW TREATMENTS (WT)				
L3 - 900A - WT	CHINESE REST.- MOTORIZED SHEER	CUSTOM	2011 MAY 31	
L3 - 900B - WT	CHINESE REST.- MOTORIZED SHEER (PAINTED FABRIC)	CUSTOM	2011 MAY 31	

Project Name: **WALDORF ASTORIA- BEIJING**Project #: **09026**Issue Date: **05/31/11**Revision(s): **02/03/12 Δ 1**
New productItem Number: **L3-500-LT**Item Description: **Pendant- Malagola / ML**Area Name: **Level 3**

Item Quantity:

Manufacturer: Catellani & Smith

Address:

Source: Trovi Technologies Co. Ltd

Address: 17th Floor, Yue Hing building
103 Hennessy road
Wanchai Mr. A.J. & roland Pe Hong Kong S.A.R

Phone:

Phone:

Fax:

Fax:

Contact:

Contact:

E-mail:

E-mail: info@Trov.Distribution.com

Web:

Web: www.Trov.Distribution.com

Model Name: Malagola / ML PeNdant

Dimensions: 8cm Dia x 2.5cm Base / 55 x 25cm Diffuser

Finish: Gold w/ black Base & Cable

Cord Length: 170cm

Lamp Type: Halogen energy Saver 230V / E27 Silver Crown

Shade/Diffuser Material: Gold w/ Gold Liner

Notes: Location= Chinese Restaurant



Required Item(s) for Designer Approval Prior to Fabrication:

Prepared By: CG

☐ Seaming Diagram ☐ Strike-Off ☐ Finish Sample ☐ Cutting ☐ Shop Dwgs ☐ Prototype ☐ Flame Certificate

Instructions:

- 1 Cords are to be a minimum of 2440 mm (8'-0" long), unless noted otherwise. Cords shall be insulated and grounded.
- 2 Lamps will have a weighted base to ensure stability & will have felt bottoms or other non-marking material.
- 3 Pendants and or flush mounted fixtures must be hard wired to an electrical J-box and activated by a wall switch or the dimming system.
- 4 Purchasing Agent is responsible for ensuring fixture complies with local power supply and local codes.
- 5 Purchasing Agent is responsible for supplying all lamps for specified fixtures.

Project Name: **WALDORF ASTORIA- BEIJING**Project #: **09026**Issue Date: **05/31/11**Revision(s): **02/03/12** **Δ 1**
New ProductItem Number: **L3-504-LT**Item Description: **Pendant- Nimbus / NB0-HL**Area Name: **Level 3**

Item Quantity:

Manufacturer: Holly Hunt (YPTO/YPNY)

Address:

Phone:

Fax:

Contact:

E-mail:

Web:

Source: Holly Hunt

Address: 150 E 58th Street
New York NY 10155-

Phone: (212) 891-2515

Fax: (212) 891-2598

Contact: Cindy Rossell

E-mail: C.Rossell@hollyhunt.com

Web: www.hollyhunt.com

Model Number: NB0-HL
 Model Name: Nimbus Pendant Size 1
 Dimensions: 6.5" dia x 12"H w/ 70" Stem (May be cut)
 Finish: Bronze Patina
 Lamp Wattage: 75W Max
 UL Listing: Listed
 Notes: Locations - WC



Required Item(s) for Designer Approval Prior to Fabrication:

Prepared By: HY

☐ Seaming Diagram
 ☐ Strike-Off
 ☐ Finish Sample
 ☐ Cutting
 ☐ Shop Dwgs
 ☐ Prototype
 ☐ Flame Certificate

Instructions:

- 1 Cords are to be a minimum of 2440 mm (8'-0" long), unless noted otherwise. Cords shall be insulated and grounded.
- 2 Lamps will have a weighted base to ensure stability & will have felt bottoms or other non-marking material.
- 3 Pendants and or flush mounted fixtures must be hard wired to an electrical J-box and activated by a wall switch or the dimming system.
- 4 Purchasing Agent is responsible for ensuring fixture complies with local power supply and local codes.
- 5 Purchasing Agent is responsible for supplying all lamps for specified fixtures.